

Anchorage Denali Express | Fairbanks Denali Express | Denali Alyeska Explorer | Denali by Rail Explorer
Authentic Alaska Explorer | Denali Valdez Explorer | Denali Talkeetna Explorer | Encore Denali Explorer | Bliss Denali Explorer

2024

ALASKA CRUISE TOURS

NCL
CRUISE TOURS
THE BEST OF LAND & SEA



SEE ALASKA EVERY WHICH WAY.

Alaska is far from ordinary, so plan a frontier vacation that goes beyond the expected. When you cruise with Norwegian, the awe of Alaska stays with you throughout your cruise. From hiking up snow-capped mountains and witnessing majestic whales splash in the Pacific to coming back on board and catching an amazing show followed by an equally amazing starlit stroll on the top deck. Or head even deeper into the wild with our Cruisetours that give you hundreds of ways to explore Alaska's vast wilderness that you can't get anywhere else. Search for bears, moose and caribou in Denali, or experience yesteryear along Skagway's charming boardwalk lined with buildings that replicate Gold Rush days. So come aboard any of our purpose-built ships that allow you experience Alaska from ship to shore, and feel what it's like when you let the outside in.



GREAT IMMERSIVE WAYS TO SEE AUTHENTIC ALASKA.

Offered before or after Norwegian Jewel's 7-day Alaska cruises and before Norwegian Bliss and Norwegian Encore's 7-day Alaska cruises.

Haines, Alaska



ANCHORAGE DENALI EXPRESS

11 DAYS LAND & CRUISE
1 NIGHT – ANCHORAGE
1 NIGHT – DENALI
1 NIGHT – ANCHORAGE

One of our best value land tours for time-conscious guests offering an up close Denali experience, tour of Alaska's largest city and moderate hotel properties.

Unique to this tour:

- Alaska Railroad Adventure Class from Anchorage to Talkeetna[▲]
- Explore Denali with a 4-5 hour Natural History bus tour
- Tour the Alaska Wildlife Conservation Center
- Brief city tour of Anchorage



FAIRBANKS DENALI EXPRESS

11 DAYS LAND & CRUISE
2 NIGHTS – FAIRBANKS
1 NIGHT – DENALI

For enthusiasts with limited time looking to discover Alaska's historic and extreme ways of life. This tour features a Denali Park visit, overview of Alaska's Golden Heart City and moderate hotel properties.

Unique to this tour:

- Riverboat Discovery Cruise and city tour of Fairbanks including a stop at the Trans-Alaska Oil Pipeline
- Alaska Railroad Adventure Class from Fairbanks to Denali[▲]
- Explore Denali with a 4-5 hour Natural History bus tour
- Tour the Alaska Wildlife Conservation Center
- Brief city tour of Anchorage

[▲]Operated in reverse on northbound sailings.



Juneau, Alaska



DENALI/ALYESKA EXPLORER

12 DAYS LAND & CRUISE
1 NIGHT – ANCHORAGE
2 NIGHTS – DENALI
1 NIGHT AT HOTEL ALYESKA

The best way for nature lovers in search of rustic elegance to experience Denali and the heart of Alaska's wilderness.

Unique to this tour:

- Deluxe Dome Railcar from Talkeetna to Denali[▲]
- Explore Denali with a 4-5 hour Natural History bus tour
- Take a tour of an Iditarod Sled Dog Musher's kennel, the #1 activity in Alaska
- Overnight stay at the 4-star Hotel Alyeska Resort, Alaska's best hotel and premier year-round resort destination
- Tour the Alaska Wildlife Conservation Center



DENALI BY RAIL EXPLORER

12 DAYS LAND & CRUISE
2 NIGHTS – FAIRBANKS
1 NIGHT – DENALI
1 NIGHT – ANCHORAGE

For train buffs seeking a Denali and Fairbanks experience, relaxing travel days and two rail segments of Alaska Railroad.

Unique to this tour:

- Two Deluxe Dome Railcar segments
- Gold panning at historic Gold Dredge #8
- Brief city tour of Fairbanks
- Take a tour of an Iditarod Sled Dog Musher's kennel, the #1 activity in Alaska
- Explore Denali with a 4-5 hour Natural History bus tour
- Tour the Alaska Wildlife Conservation Center

WHY BOOK A CRUISETOUR WITH NORWEGIAN?

All tours are fully escorted by local Alaskan guides

12- and 13-day Cruisetours include a visit with an Iditarod Sled Dog Musher

Opportunities for animal sightings

All tours feature travel on the rails of Alaska Railroad

[▲]Operated in reverse on northbound sailings.



Glacier Bay, Alaska



AUTHENTIC ALASKA EXPLORER

- 14 DAYS LAND & CRUISE**
- 1 NIGHT – FAIRBANKS
- 2 NIGHTS – DENALI
- 1 NIGHT – ANCHORAGE
- 2 NIGHTS – HOMER

The most complete tour of Denali and Alaskan life in the past and present. For the active, outgoing guest, this tour offers spectacular vantage points of Denali and an extended stay in Homer – the halibut capital of the world – giving you time to purchase an optional all-day fishing excursion.

Unique to this tour:

- Riverboat Discovery Cruise and city tour of Fairbanks
- Explore Denali with a 4-5 hour Denali Natural History Tour
- Deluxe Dome Railcar from Denali to Talkeetna▲
- Take a tour of an Iditarod Sled Dog Musher’s kennel, the #1 activity in Alaska
- Kenai Peninsula and the artsy fishing community of Homer
- Opportunity to purchase a Halibut and Salmon fishing excursion
- Tour the Alaska Wildlife Conservation Center



DENALI VALDEZ EXPLORER

- 14 DAYS LAND & CRUISE**
- 1 NIGHT – ANCHORAGE
- 2 NIGHTS – DENALI
- 2 NIGHTS – FAIRBANKS
- 1 NIGHT – VALDEZ

Our most picturesque tour of Denali and the Alaska wilderness featuring rarely seen vistas, spectacular mountain passes and glaciers galore. This tour offers abundant marine wildlife viewing opportunities during the day boat cruise across Prince William Sound.

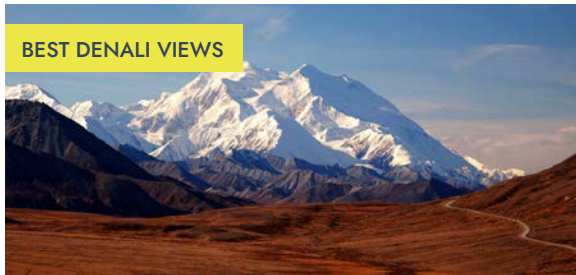
Unique to this tour:

- Explore Denali with a 4-5 hour Natural History bus tour
- Deluxe Dome Railcar journey along the rails of the Alaska Railroad between Anchorage and Talkeetna
- Take a tour of an Iditarod Sled Dog Musher’s kennel, the #1 activity in Alaska
- City tour of Fairbanks
- Gold panning at historic Gold Dredge #8
- Journey south along the Richardson Highway to Valdez, the terminus of the Alyeska Pipeline
- Cruise across the pristine waters of Prince William Sound
- Tour the Alaska Wildlife Conservation Center with guaranteed animal sightings

▲ Operated in reverse on northbound sailings.



Juneau, Alaska



DENALI TALKEETNA EXPLORER†

13 DAYS LAND & CRUISE
2 NIGHTS – FAIRBANKS
2 NIGHTS – DENALI
1 NIGHT – TALKEETNA

Explore Alaska as the mountain climbers do with an overnight stay in the quaint community of Talkeetna, located 60 miles from the base of Mt. Denali. This tour gives you the opportunity to see the largest mountain in North America from two distinctly different views.

Unique to this tour:

- 6-day land tour fully escorted by a local guide
- Riverboat Discovery Cruise and city tour of Fairbanks
- Deluxe Dome Railcar journey along the rails of the Alaska Railroad between Fairbanks and Denali
- Explore Denali with a 4-5 hour Natural History bus tour
- Take a tour of an Iditarod Sled Dog Musher's kennel, the #1 activity in Alaska
- Overnight in one of the finest lodges in Alaska, the Talkeetna Lodge with great views of Mt. Denali
- Tour the Alaska Wildlife Conservation Center with guaranteed animal sightings

†Tour available on southbound sailings only.



BLISS/ENCORE DENALI EXPLORER‡

NORWEGIAN BLISS

12 DAYS LAND & CRUISE
2 NIGHTS – FAIRBANKS
1 NIGHT – DENALI
1 NIGHT – ANCHORAGE

NORWEGIAN ENCORE

13 DAYS LAND & CRUISE
2 NIGHTS – FAIRBANKS
1 NIGHT – DENALI
2 NIGHTS – ANCHORAGE

A comprehensive Alaska Denali program complete with riverboat and railroad experiences as well as a preview of Denali's incredible wilderness.

Unique to this tour:

- 5 or 6-day land tour fully escorted by a local guide
- Riverboat Discovery Cruise and city tour of Fairbanks including a stop at the Trans-Alaska Oil Pipeline
- Deluxe Dome Railcar from Talkeetna to Anchorage
- Explore Denali with a 4-5 hour Natural History bus tour
- Visit an Iditarod Sled Dog Musher's kennel for a tour

Transportation to Anchorage International Airport and the economy class flight to Seattle to board Norwegian Bliss and Norwegian Encore are included.

‡Tour available pre-cruise only.

ANCHORAGE DENALI EXPRESS

One of our best value land tours for time-conscious guests offering an up close Denali experience, tour of Alaska's largest city and moderate hotel properties.

PLEASE NOTE

If you are making tour arrangements with guests in other cabins, please be sure to notify the reservations agent when booking Alaska Cruisetours. Guests may be routed differently if the reservations are not linked together. Thank you.

SOUTHBOUND TOUR ITINERARY†

DAY 1: FRIDAY-AIR

ARRIVAL DAY INTO ANCHORAGE*

Welcome to Anchorage. Whether you're exploring Alaska's largest city or the wonderful amenities your hotel has to offer, get ready for an unforgettable journey in the days ahead. Please note the standard hotel check-in time is 3:00 pm. Enjoy the rest of your day at leisure.

Overnight: Anchorage

DAY 2: SATURDAY-ANCHORAGE/DENALI

Your Norwegian Cruise Line Tour Director will greet you at your Anchorage hotel this morning. Today you'll ride on the world-famous Alaska Railroad from Anchorage to Talkeetna. Along the journey, wander the train, purchase a meal in the dining car, or just sit in your comfortable reclining seat and gaze at the magnificent scenery. Alaska Railroad Adventure Class features single-level cars with high ceilings, large picture windows and ample legroom. Upon arrival into Talkeetna, you will transfer to a deluxe motorcoach for your ride to Denali National Park.

Open evening for optional activities such as whitewater rafting, helicopter flightseeing, hiking or one of the park service programs.

7:30 am	Depart Anchorage Hotel
8:00 am	Alaska Railroad Adventure Class, Anchorage to Talkeetna
11:00 am	Arrive Talkeetna then motorcoach to Denali
4:00 pm	Arrive in Denali

Overnight: Denali

DAY 3: SUNDAY-DENALI/ANCHORAGE

More than just the mountain, Denali National Park is six million acres of wild land. Hop on the National Park Service bus and travel into this pristine region of Alaska on the only road into and out of the park. Along the way, enjoy a fully narrated ride learning about the flora and fauna of the area while looking out for the wild animals that roam freely and call this park home. While in this beautiful area, set aside time to experience the solitude and tranquility that vast wilderness can provide. During your Denali Natural History tour, you will travel 17 miles into Denali National Park, enjoying the incredible scenery and learning about the history of the park.

Tour duration is approximately 4-5 hours with starting times throughout the day. Upon arrival in Alaska, your Tour Director will advise you of your tour time. This afternoon, depart Denali National Park by motorcoach to Anchorage. Overnight in Anchorage.

7:00 am	(approx.) Denali Natural History Tour
12-1:00 pm	Lunch on your own in Denali
1:00 pm	Depart Denali
7:30 pm	Arrive in Anchorage

Overnight: Anchorage

DAY 4: MONDAY-ANCHORAGE/SEWARD

Travel from Anchorage via deluxe motorcoach to Seward. Enjoy a brief city tour of Anchorage and then continue south down the Turnagain Arm along the Seward Highway. This "All American Scenic Highway" has spectacular views of the Cook Inlet and Chugach Mountains. In dramatic fashion, see where the mountains meet the sea. Stop at the Alaska Wildlife Conservation Center and get up close to moose, bears, musk ox and other indigenous animals of the region. Taking in orphaned animals and providing quality animal care year-round, the Conservation Center is dedicated to the protection and preservation of Alaska's wildlife. Animals that cannot be released back into the wild are given a permanent home at the Center.

Continue on to Seward to board Norwegian Jewel for your 7-day cruise.

11:00 am	Depart Hotel and brief Anchorage City Tour
12:00 pm	Lunch on own
1:00 pm	Depart Anchorage
2:00 pm	Arrive at Alaska Wildlife Conservation Center
3:00 pm	Depart Alaska Wildlife Conservation Center
5:00 pm	Arrive in Seward and embark Norwegian Jewel

DAYS 5-11: TUESDAY-MONDAY NORWEGIAN JEWEL SOUTHBOUND CRUISE



Denali, Alaska



Denali, Alaska



Juneau, Alaska

Note: All times shown are approximate and subject to change without notice due to local conditions.

* The transfer from Airport to Hotel is included when arriving flight information is provided to Norwegian Cruise Line at least 10 days prior to tour start date. Transfer is offered only on the starting date of the tour. Guests who do not provide flight information within the guidelines forfeit this service. Unused transfers are non-refundable.

ANCHORAGE DENALI EXPRESS

PLEASE NOTE

If you are making tour arrangements with guests in other cabins, please be sure to notify the reservations agent when booking Alaska Cruisetours. Guests may be routed differently if the reservations are not linked together. Thank you.

NORTHBOUND TOUR ITINERARY†

DAYS 1-7: MONDAY-SUNDAY NORWEGIAN JEWEL NORTHBOUND CRUISE

DAY 8: MONDAY-SEWARD/ANCHORAGE

Your Norwegian Cruise Line Tour Director will greet you in Seward upon debarkation of Norwegian Jewel for your fully escorted tour. Board your deluxe motorcoach and travel from Seward to the Alaska Wildlife Conservation Center where you'll get up close to moose, bears, musk ox and other indigenous animals of the region. Taking in orphaned animals and providing quality animal care year-round, the Conservation Center is dedicated to the protection and preservation of Alaska's wildlife. Animals that cannot be released back into the wild are given a permanent home at the Center.

Continue in the deluxe motorcoach to Anchorage, Alaska's largest city, which is surrounded by beautiful mountains and water with many walking trails available for you to explore. Enjoy a city tour of Anchorage and time on your own for lunch at one of the many local restaurants. During the extended daylight hours in the summer months, you'll have plenty of time to enjoy evening activities to suit your personal style.

8:30 am	Disembark Ship
10:30 am	Alaska Wildlife Conservation Center
12:30 pm	Anchorage City Tour and lunch on your own
3:30 pm	Arrive at Anchorage Hotel

Overnight: Anchorage

DAY 9: TUESDAY-ANCHORAGE/DENALI

This morning, board your deluxe motorcoach to Denali National Park. More than just the mountain, Denali National Park is six million acres of wild land. After lunch on your own, your tour will take you into this pristine region of Alaska on the only road into and out of the park.

Along the way, enjoy a fully narrated ride learning about the flora and fauna of the area while looking out for the wild animals that roam freely and call this park home. While in this beautiful area, set aside time to experience the solitude and tranquility that vast wilderness can provide. During your Denali Natural History tour, you will travel approximately 17 miles into Denali National Park, enjoying the incredible scenery and learning about the history of the park. Tour duration is approximately 4-5 hours. Upon your arrival in Seward, your Tour Director will advise you of your tour time.

7:30 am	Depart for Denali
1:30 pm	(approx.) Denali Natural History Tour

Overnight: Denali

DAY 10: WEDNESDAY-DENALI/ANCHORAGE

Your morning is open for optional activities in Denali. Later in the day, you'll take a motorcoach ride from Denali to Talkeetna and travel along the Susitna River where you're likely to see some wildlife. Continue via the Alaska Railroad from Talkeetna to Anchorage. Along the journey, wander the train, purchase a meal in the dining car, or just sit in your comfortable reclining seat and gaze at the magnificent scenery. Alaska Railroad Adventure Class features single-level cars with high ceilings, large picture windows and ample legroom.

12:00 pm	Motorcoach from Denali to Talkeetna
5:00 pm	Alaska Railroad Adventure Class, Talkeetna to Anchorage
8:30 pm	Arrive at Anchorage Hotel

Overnight: Anchorage

DAY 11: THURSDAY-RETURN HOME FROM ANCHORAGE*

Transfer to the Anchorage International Airport for your flight home. The transfer between the hotel and airport is included in the tour.



Denali National Park and Preserve, Alaska

*The transfer from hotel to airport is included when departing flight information is provided to Norwegian Cruise Line at least 10 days prior to cruise start date. Transfer is offered only on the ending date of the tour. Guests who do not provide flight information within the guidelines forfeit this service. Unused transfers are non-refundable.

FAIRBANKS DENALI EXPRESS

For enthusiasts with limited time looking to discover Alaska's historic and extreme ways of life. This tour features a Denali Park visit, overview of Alaska's Golden Heart City and moderate hotel properties.

PLEASE NOTE

If you are making tour arrangements with guests in other cabins, please be sure to notify the reservations agent when booking Alaska Cruisetours. Guests may be routed differently if the reservations are not linked together. Thank you.

SOUTHBOUND TOUR ITINERARY[†]

DAY 1: Friday - Air Arrival Day* Into Fairbanks

Welcome to Fairbanks. Whether you're exploring Alaska's Golden Heart City or the wonderful amenities your hotel has to offer, get ready for an unforgettable journey in the days ahead fully escorted by a local Alaskan guide. Please note the standard hotel check-in time is 3:00 pm. Guests who arrive earlier may have to wait to occupy their rooms. Enjoy the rest of your day at leisure.

Overnight: Fairbanks

DAY 2: Saturday - Fairbanks

Your Norwegian Cruise Line Tour Director will greet you at your Fairbanks hotel this morning. Today you'll enjoy a city tour of Fairbanks in a deluxe motorcoach. The tour includes a stop at the Trans-Alaska Oil Pipeline and gives you a great overview of the Fairbanks community. After lunch on your own, you'll enjoy a ride on the *Riverboat Discovery*, a three-hour journey that will take you into the heart of Alaska. Operated by a family who has made the Alaskan rivers home for five generations, you'll witness a Bush Pilot take off and land beside the boat, and hear stories of flying into remote Alaska firsthand. Halfway through the experience, you'll be immersed in frontier living with a guided walking tour of a re-created Athabascan Indian village. See cabins made of spruce logs, along with other indigenous dwellings that have allowed the strong Athabascan people to survive for thousands of years in this harsh environment.

Open evening to explore Fairbanks or take an optional tour.

9:00 am	Depart Hotel for Fairbanks City Tour
11:00 am	Lunch on your own in Fairbanks
2:00 pm	<i>Riverboat Discovery</i> Cruise
5:30 pm	Arrive at hotel

(Itinerary may be altered with a morning Riverboat Discovery cruise and afternoon Fairbanks city tour)

Overnight: Fairbanks

DAY 3: Sunday - Fairbanks/Denali

This morning, enjoy traveling along the rails of the Alaska Railroad to Denali National Park. Along the journey, wander the train, purchase a meal in the dining car, or just sit in your comfortable reclining seat and gaze at the magnificent scenery. Alaska Railroad Adventure Class features single-level cars with high ceilings, large picture windows and ample legroom. As you travel through the high tundra plateau into the Healy Gorge and Canyon, be watchful for wildlife during your rail journey.

More than just the mountain, Denali National Park is six million acres of wild land. After lunch on your own, your tour will take you into this pristine region of Alaska on the only road into and out of the park. Along the way, enjoy a fully narrated ride learning about the flora and fauna of the area while looking out for the wild animals that roam freely and call this park home. While in this beautiful area, set aside time to experience the solitude and tranquility that vast wilderness can provide.

During your Denali Natural History tour, you will travel approximately 17 miles into Denali National Park, enjoying the incredible scenery and learning about the history of the park. Tour duration is approximately 4-5 hours. Upon arrival in Alaska, your Tour Director will advise you of your tour time.

8:15 am	Alaska Railroad Adventure Class, Fairbanks to Denali
12:15 pm	Arrive in Denali
1:00 pm	(approx.) Denali Natural History Tour

Overnight: Denali

DAY 4: Monday - Denali/Seward

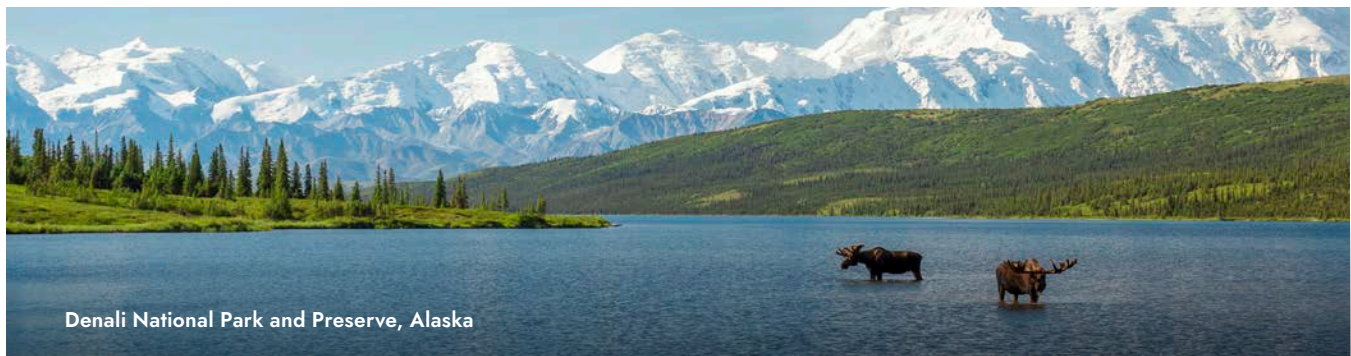
Travel from Denali via deluxe motorcoach to Seward. Enjoy a brief city tour of Anchorage and then continue south down the Turnagain Arm along the Seward Highway. This "All-American Scenic Highway" has spectacular views of the Cook Inlet and Chugach Mountains. In dramatic fashion, see where the mountains meet the sea. Stop at the Alaska Wildlife Conservation Center and get up close to moose, bears, musk ox and other indigenous animals of the region. Taking in orphaned animals and providing quality animal care year-round, the Conservation Center is dedicated to the protection and preservation of Alaska's wildlife. Animals that cannot be released back into the wild are given a permanent home at the Center.

Continue on to Seward to board Norwegian Jewel for your 7-day cruise.

7:00 am	Depart Denali
12:00 pm	Arrive in Anchorage, free time for lunch, brief city tour
3:00 pm	Alaska Wildlife Conservation Center
5:30 pm	Arrive in Seward and embark Norwegian Jewel

DAYS 5 - 11: Tuesday - Monday

Norwegian Jewel Southbound Cruise.



Denali National Park and Preserve, Alaska

** Itinerary may be altered with a morning Riverboat Discovery cruise and afternoon Fairbanks city tour

* The transfer from Airport to Hotel is included when arriving flight information is provided to Norwegian Cruise Line at least 10 days prior to tour start date. Transfer is offered only on the starting date of the tour. Guests who do not provide flight information within the guidelines forfeit this service. Unused transfers are non-refundable.

FAIRBANKS DENALI EXPRESS

PLEASE NOTE

If you are making tour arrangements with guests in other cabins, please be sure to notify the reservations agent when booking Alaska Cruisetours. Guests may be routed differently if the reservations are not linked together. Thank you.

NORTHBOUND TOUR ITINERARY†

DAYS 1-7: Monday - Sunday

Norwegian Jewel Northbound Cruise

DAY 8: Monday - Seward/Denali

Your Norwegian Cruise Line Tour Director will greet you in Seward upon debarkation of Norwegian Jewel for your fully escorted tour. Board your deluxe motorcoach and travel from Seward to the Alaska Wildlife Conservation Center where you'll get up close to moose, bears, musk ox and other indigenous animals of the region. Taking in orphaned animals and providing quality animal care year-round, the Conservation Center is dedicated to the protection and preservation of Alaska's wildlife. Animals that cannot be released back into the wild are given a permanent home at the Center.

Enjoy a brief city tour of Anchorage with free time for lunch and shopping as you drive through town en route to Denali National Park. Open evening for optional activities such as whitewater rafting, helicopter flightseeing, hiking or one of the park service programs.

7:00 am	Disembark Ship
9:00 am	Alaska Wildlife Conservation Center
10:45 am	Anchorage City Tour and lunch on your own
6:00 pm	Arrive at Denali Hotel

Overnight: Denali

DAY 9: Tuesday - Denali/Fairbanks

More than just the mountain, Denali National Park is six million acres of wild land. This morning, your tour will take you into this pristine region of Alaska on the only road into and out of the park. Along the way, enjoy a fully narrated ride learning about the flora and fauna of the area while looking out for the wild animals that roam freely and call this park home. While in this beautiful area, set aside time to experience the solitude and tranquility that vast wilderness can provide.

During your Denali Natural History tour, you will travel 17 miles into Denali National Park, enjoying the incredible scenery and learning about the history of the park. Tour duration is approximately 4 hours. Upon arrival in Alaska, your Tour Director will advise you of your tour time.

Following your park tour, you'll enjoy travelling along the rails of the Alaska Railroad to Fairbanks. Along the journey, wander the train, purchase a meal in the dining car, or just sit in your comfortable reclining seat and gaze at the magnificent scenery. Alaska Railroad Adventure Class features single-level cars with high ceilings, large picture windows and ample legroom.

As the Healy Gorge and Canyon roll into the high tundra plateau, be watchful for wildlife. Full bar and meal service are available for purchase during your rail journey.

8:00 am	(approx.) Denali Natural History Tour
4:00 pm	Alaska Railroad Denali to Fairbanks – Adventure Class
8:30 pm	Arrive in Fairbanks

Overnight: Fairbanks

DAY 10: Wednesday - Fairbanks

This morning, enjoy a city tour of Fairbanks in a deluxe motorcoach. The tour includes a stop at the Trans-Alaska Oil Pipeline and gives you a great overview of the Fairbanks community. This afternoon, enjoy a ride on the Riverboat Discovery, a three-hour journey that will take you into the heart of Alaska. Operated by a family who has made the Alaskan rivers home for five generations, you'll witness a Bush Pilot take off and land beside the boat, and hear stories of flying into remote Alaska firsthand. Halfway through the experience, you'll be immersed in frontier living with a guided walking tour of a recreated Athabascan Indian village. See cabins made of spruce logs, along with other indigenous dwellings that have allowed the strong Athabascan people to survive for thousands of years in this harsh environment. Open evening to explore Fairbanks or take an optional tour.

9:00 am	Depart Hotel for Fairbanks City Tour
11:00 am	Lunch on your own in Fairbanks
2:00 pm	Riverboat Discovery Cruise
5:30 pm	Arrive at Hotel

(Itinerary may be altered with a morning Riverboat Discovery cruise and afternoon Fairbanks city tour).

Overnight: Fairbanks

DAY 11: Thursday - Return Home From Fairbanks*

Transfer to the Fairbanks International Airport for your flight home. The transfer between the hotel and airport is included in the tour.



Sitka, Alaska



Fairbanks, Alaska

** Itinerary may be altered with a morning Riverboat Discovery cruise and afternoon Fairbanks city tour

*The transfer from hotel to airport is included when departing flight information is provided to Norwegian Cruise Line at least 10 days prior to cruise start date. Transfer is offered only on the ending date of the tour. Guests who do not provide flight information within the guidelines forfeit this service. Unused transfers are non-refundable.

DENALI/ALYESKA EXPLORER

The best way for nature lovers in search of rustic elegance to experience Denali and the heart of Alaska's wilderness.

PLEASE NOTE

If you are making tour arrangements with guests in other cabins, please be sure to notify the reservations agent when booking Alaska Cruisetours. Guests may be routed differently if the reservations are not linked together. Thank you.

SOUTHBOUND TOUR ITINERARY†

DAY 1: Thursday - Anchorage Air Arrival Day*

Welcome to Anchorage. Whether you're exploring Alaska's largest city or the wonderful amenities your hotel has to offer, get ready for an unforgettable journey in the days ahead, fully escorted by a local Alaskan guide.

Please note the standard hotel check-in time is 3:00 pm. Enjoy the rest of the day at leisure.

Overnight: Anchorage

DAY 2: Friday - Anchorage/Denali

Your Norwegian Cruise Line Tour Director will greet you at your hotel this morning for a group orientation meeting. After the meeting, board a deluxe motorcoach for the drive to Talkeetna. Next, enjoy traveling along the rails of the Alaska Railroad from Talkeetna to Denali, with 360-degree views from your deluxe dome railcar seat. As the gorgeous scenery of Alaska rolls past, be watchful for wildlife and glimpses of Mt. Denali or, as local Alaskans call it, "The Great One." Full bar and meal service are available for purchase during your rail journey.

Open evening for optional activities such as whitewater rafting, helicopter flightseeing, hiking or one of the park service programs.

7:30 am Depart for Talkeetna via motorcoach

11:00 am Deluxe Dome Rail, Talkeetna to Denali

4:00 pm Arrive in Denali

Overnight: Denali

DAY 3: Saturday - Denali

More than just a mountain, Denali National Park is six million acres of wild land. Hop on the National Park Service bus and travel into this pristine region of Alaska on the only road into and out of the park. Along the way, enjoy a fully narrated ride learning about the flora and fauna of the area while looking out for the wild animals that roam freely and call this park home. While in this beautiful area, set aside time to experience the solitude and tranquility that vast wilderness can provide. During your Denali Natural History tour, you will travel approximately 17 miles into Denali National Park, enjoying the incredible scenery and learning about the history of the park. Tour duration is approximately 4-5 hours. Upon arrival in Alaska, your Tour Director will advise you of your tour time. The remaining part of the day is open for optional activities.

7:00 am (Approx.) Denali Natural History Tour

Overnight: Denali

DAY 4: Sunday - Denali/Girdwood

Travel from Denali via deluxe motorcoach to Girdwood. On your way, learn about the Alaska state sport of dog mushing with a stop at a local Iditarod sled dog kennel. You'll be amazed to learn about this fascinating sport, the musher and the dogs — and you'll even get to hold a future champion puppy in your arms. After this authentic visit, we won't be surprised if you are ready to run "The Last Great Race" yourself.

Enjoy a brief narrated drive through Anchorage and then continue south down the Turnagain Arm along the Seward Highway. This "All-American Scenic Highway" has spectacular views of the Cook Inlet and Chugach Mountains. In dramatic fashion, see where the mountains meet the sea.

7:30 am Depart Denali

12:00 pm Iditarod Sled Dog Kennel Visit

2:00 pm Depart for Anchorage

3:30 pm Narrated drive through Anchorage

5:00 pm Arrive at Hotel Alyeska Resort

Overnight: Girdwood

DAY 5: Monday - Girdwood/Seward

This morning, spend free time in the resort to hike on the trails, enjoy the swimming pool or take a helicopter ride and land on a glacier. This afternoon, transfer via motorcoach to the Alaska Wildlife Conservation Center, where you'll get up close to moose, bears, musk ox and other indigenous animals of the region. Taking in orphaned animals and providing quality animal care year-round, the Conservation Center is dedicated to the protection and preservation of Alaska's wildlife. Animals that cannot be released back into the wild are given a permanent home at the Center. Continue on to Seward to board Norwegian Jewel for your 7-Day cruise.

12:00 pm Depart Hotel Alyeska Resort

12:30 pm Arrive at Alaska Wildfire Conservation Center

1:30 pm Depart Alaska Wildlife Conservation Center

3:00 pm Arrive in Seward And embark Norwegian Jewel

DAYS 6-12: Tuesday - Monday Norwegian Jewel Southbound Cruise

Note: All times shown are approximate and subject to change without notice due to local conditions.



Inside Passage, Alaska



Juneau, Alaska

* The transfer from Airport to Hotel is included when arriving flight information is provided to Norwegian Cruise Line at least 10 days prior to tour start date. Transfer is offered only on the starting date of the tour. Guests who do not provide flight information within the guidelines forfeit this service. Unused transfers are non-refundable.

DENALI/ALYESKA EXPLORER

PLEASE NOTE

If you are making tour arrangements with guests in other cabins, please be sure to notify the reservations agent when booking Alaska Cruisetours. Guests may be routed differently if the reservations are not linked together. Thank you.

NORTHBOUND TOUR ITINERARY†

DAYS 1-7: Monday - Sunday
Norwegian Jewel Northbound Cruise

DAY 8: Monday - Seward/Girdwood

Your Norwegian Cruise Line Tour Director will greet you in Seward upon debarkation of Norwegian Jewel. Board your deluxe motorcoach and travel from Seward to the Alaska Wildlife Conservation Center, where you'll get up close to moose, bears, musk ox and other indigenous animals of the region. Taking in orphaned animals and providing quality animal care year-round, the Conservation Center is dedicated to the protection and preservation of Alaska's wildlife. Animals that cannot be released back into the wild are given a permanent home at the Center.

While at the hotel, enjoy the swimming pool or other world-class amenities, hike the many trails in the area or book an optional tour.

9:30 am	Disembark Norwegian Jewel
10:00 am	Seward City Tour and time on your own in Seward
11:30 am	Depart Seward
1:15 pm	Arrive at Alaska Wildlife Conservation Center
2:15 pm	Depart Alaska Wildlife Conservation Center
2:45 pm	Arrive at Hotel Alyeska Resort

Overnight: Girdwood

DAY 9: Tuesday - Girdwood/Denali

Today, travel to Denali via motorcoach. Enjoy a city tour of Anchorage as you drive through town en route to Denali National Park. Continuing north, you'll learn about the Alaska state sport of dog mushing, with an included stop at a local Iditarod sled dog kennel. You'll be amazed to learn about this fascinating sport, the musher and the dogs—you'll even get to hold a future champion puppy in your arms. After this authentic visit, we won't be surprised if you are ready to run "The Last Great Race" yourself. Continue to Denali National Park.

8:30 am	Depart Hotel Alyeska Resort
9:30 am	Brief Anchorage City Tour
12:00 pm	Iditarod Sled Dog Kennel Visit
1:45 pm	Depart for Denali
5:30 pm	Arrive in Denali

Overnight: Denali

DAY 10: Wednesday - Denali

More than just a mountain, Denali National Park is 6 million acres of wild land. Hop on the National Park Service bus and travel into this pristine region of Alaska on the only road into and out of the park. Along the way, enjoy a fully narrated ride learning about the flora and fauna of the area while looking out for the wild animals that roam freely and call this park home. While in this beautiful area, set aside time to experience the solitude and tranquility that vast wilderness can provide.

During your Denali Natural History tour, you will travel approximately 17 miles into Denali National Park, enjoying the incredible scenery and learning about the history of the park. Tour duration is approximately 4-5 hours. The remaining part of the day is open for optional activities such as whitewater rafting, helicopter flightseeing, hiking or one of the park service programs.

7:00 am (approx)	Denali Natural History Tour
-------------------------	-----------------------------

Overnight: Denali

DAY 11: Thursday - Denali/Anchorage

Today, enjoy traveling along the rails of the Alaska Railroad from Denali to Talkeetna with 360-degree views from your deluxe dome rail car seats. As the gorgeous scenery of Alaska rolls past, be watchful for wildlife and glimpses of Mt. Denali or, as local Alaskans call it, "The Great One." Full bar and meal service are available for purchase during your rail journey.

12:30 pm	Deluxe Dome Rail, Denali to Talkeetna
5:00 pm	Depart Talkeetna by motorcoach
7:30 pm	Arrive in Anchorage

Overnight: Anchorage

DAY 12: Friday - Return Home From Anchorage

Transfer to the Anchorage International Airport for your flight home. The transfer between the hotel and airport is included.

NOTE: All times shown are approximate and subject to change without notice due to local conditions.



Glacier Bay, Alaska



Skagway, Alaska

†The transfer from hotel to airport is included when departing flight information is provided to Norwegian Cruise Line at least 10 days prior to cruise start date. Transfer is offered only on the ending date of the tour. Guests who do not provide flight information within the guidelines forfeit this service. Unused transfers are non-refundable.

DENALI BY RAIL EXPLORER

For train buffs seeking a Denali and Fairbanks experience, relaxing travel days and two segments on the rails of Alaska Railroad.

PLEASE NOTE

If you are making tour arrangements with guests in other cabins, please be sure to notify the reservations agent when booking Alaska Cruisetours. Guests may be routed differently if the reservations are not linked together. Thank you.

SOUTHBOUND TOUR ITINERARY†

DAY 1: THURSDAY - FAIRBANKS AIR ARRIVAL DAY*

Welcome to Fairbanks. Whether you're exploring Alaska's Golden Heart City or the wonderful amenities your hotel has to offer, get ready for an unforgettable journey in the days ahead. Please note the standard hotel check-in time is 3:00 pm. Enjoy the rest of your day at leisure.

Overnight: Fairbanks

DAY 2: FRIDAY - FAIRBANKS

Your Norwegian Cruise Line Tour Director will greet you at your Fairbanks hotel. This morning, board your deluxe motorcoach for a city tour of Fairbanks. Next you will enjoy a visit to the historic Gold Dredge #8 where you will get the chance to do some panning just like the early pioneers of Alaska. Open afternoon and evening to explore Fairbanks or take an optional tour.

9:30 am	Gold Dredge #8
11:30 am	Fairbanks City Tour and Lunch on own

Overnight: Fairbanks

DAY 3: SATURDAY - FAIRBANKS/DENALI

This morning you'll ride along the rails of the world-famous Alaska Railroad from Fairbanks to Denali, with 360-degree views from your deluxe dome railcar seats. Full bar and meal service are available for purchase during your rail journey.

More than just the mountain, Denali National Park is six million acres of wild land. After lunch on your own, your tour will take you into this pristine region of Alaska on the only road into and out of the park. Along the way, enjoy a fully narrated ride learning about the flora and fauna of the area while looking out for the wild animals that roam freely and call this park home. While in this beautiful area, set aside time to experience the solitude and tranquility that vast wilderness can provide. During your Denali Natural History tour, you will travel approximately 17 miles into Denali National Park, enjoying the incredible scenery and learning about the history of the park. Tour duration is approximately 4-5 hours. Your Tour Director will advise you of your tour time.

8:15 am	Deluxe Dome Rail, Fairbanks to Denali
12:30 pm	Lunch on your own
1:30 pm (approx.)	Denali Natural History Tour

Overnight: Denali



Denali, Alaska

DAY 4: SUNDAY - DENALI/ANCHORAGE

This morning is open for optional activities in Denali before heading out to learn about the Alaska state sport of dog mushing with an included stop at a local Iditarod sled dog kennel. You'll be amazed to learn about this fascinating sport, the musher, the dogs, and even get to hold a future champion puppy in your arms. After this authentic visit, we won't be surprised if you are ready to run "The Last Great Race" yourself. Travel by motorcoach to the town of Talkeetna and then, you'll take your second segment along the rails of the Alaska Railroad from Talkeetna to Anchorage in a deluxe dome railcar. As the gorgeous scenery of Alaska rolls past, be watchful for wildlife, as well as glimpses of Mt. Denali, or, as the Alaskans call it, "The Great One". Full bar and meal service are available for purchase during your rail journey.

8:30 am	Iditarod Sled Dog Kennel Visit (Time subject to change)
1:00 pm	Lunch and on-own in Talkeetna
5:00 pm	Deluxe Dome Rail - Talkeetna to Anchorage

Overnight: Anchorage

DAY 5: MONDAY - ANCHORAGE/SEWARD

This morning, enjoy a brief city tour of Anchorage and then continue south down the Turnagain Arm along the Seward Highway. This "All-American Scenic Highway" has spectacular views of the Cook Inlet and Chugach Mountains. In dramatic fashion, see where the mountains meet the sea. Stop at the Alaska Wildlife Conservation Center and get up close to moose, bears, musk ox and other indigenous animals of the region. Taking in orphaned animals and providing quality animal care year-round, the Conservation Center is dedicated to the protection and preservation of Alaska's wildlife. Animals that cannot be released back into the wild are given a permanent home at the Center. Continue on by motorcoach to Seward to board Norwegian Jewel for your 7-day cruise.

10:00 am	Anchorage City Tour
2:30 pm	Alaska Wildlife Conservation Center
5:00 pm	Arrive in Seward and embark Norwegian Jewel

DAYS 6-12: TUESDAY - MONDAY

Norwegian Jewel Southbound Cruise

** Time subject to change.

* The transfer from Airport to Hotel is included when arriving flight information is provided to Norwegian Cruise Line at least 10 days prior to tour start date. Transfer is offered only on the starting date of the tour. Guests who do not provide flight information within the guidelines forfeit this service. Unused transfers are non-refundable.

All times shown are approximate and subject to change without notice due to local conditions

DENALI BY RAIL EXPLORER

PLEASE NOTE

If you are making tour arrangements with guests in other cabins, please be sure to notify the reservations agent when booking Alaska Cruisetours. Guests may be routed differently if the reservations are not linked together. Thank you.

NORTHBOUND TOUR ITINERARY†

DAYS 1-7: MONDAY - SUNDAY

Norwegian Jewel Glacier Bay Northbound Cruise

DAY 8: MONDAY - SEWARD/ANCHORAGE

Your Norwegian Cruise Line Tour Director will greet you in Seward upon debarkation of Norwegian Jewel for your fully escorted tour. Board your deluxe motorcoach and travel from Seward to the Alaska Wildlife Conservation Center where you'll get up close to moose, bears, musk ox and other indigenous animals of the region. Taking in orphaned animals and providing quality animal care year-round, the Conservation Center is dedicated to the protection and preservation of Alaska's wildlife. Animals that cannot be released back into the wild are given a permanent home at the Center. Enjoy a brief city tour of Anchorage with free time for lunch and shopping. During the extended daylight in the summer months, you'll have plenty of time to enjoy evening activities.

8:00 am	Disembark Ship
10:30 am	Alaska Wildlife Conservation Center
1:30 pm	Anchorage City Tour

Overnight: Anchorage

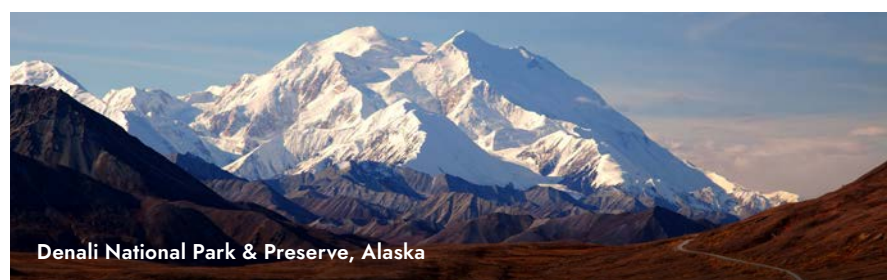
DAY 9: TUESDAY - ANCHORAGE/DENALI

This morning you'll ride along the rails of the world-famous Alaska Railroad from Anchorage to Talkeetna, with 360-degree views from your deluxe dome railcar seats. As the gorgeous scenery of Alaska rolls past, be watchful for wildlife, as well as a glimpse of Mt. Denali, or, as local Alaskans call it, "The Great One." Full bar and meal service are available for purchase during your rail journey.

Travel by motorcoach to Denali National park. Along the way you immerse yourself in the state sport of dog mushing with an included stop at a local Iditarod sled dog kennel. You'll be amazed to learn about this fascinating sport, the musher, the dogs, and even get to hold a future champion puppy in your arms. After this authentic visit, we won't be surprised if you are ready to run "The Last Great Race" yourself. Continue travel by motorcoach to Denali National Park. Open evening for optional activities such as whitewater rafting, helicopter flightseeing, hiking are just a few of the opportunities available to you this evening.

8:00 am	Deluxe Dome Rail, Anchorage to Talkeetna
3:30 pm	Iditarod Sled Dog Kennel Visit(Time subject to change)
6:00 pm	Arrive at Denali Hotel

Overnight: Denali



Denali National Park & Preserve, Alaska

DAY 10: WEDNESDAY - DENALI/FAIRBANKS

More than just the mountain, Denali National Park is six million acres of wild land. This morning, your tour will take you into this pristine region of Alaska on the only road into and out of the park. Along the way, enjoy a fully narrated ride learning about the flora and fauna of the area while looking out for the wild animals that roam freely and call this park home. While in this beautiful area, set aside time to experience the solitude and tranquility that vast wilderness can provide. During your Denali Natural History tour, you will travel approximately 17 miles into Denali National Park, enjoying the incredible scenery and learning about the history of the park. Tour duration is approximately 4-5 hours. Upon arrival in Alaska, your Tour Director will advise you of your tour time. Following your park tour, you'll take your second segment along the rails of the Alaska Railroad to Fairbanks in a deluxe dome railcar. As the gorgeous scenery of the Healy Gorge and Canyon rolls into the high tundra plateau, be watchful for wildlife. Full bar and meal service are available for purchase during your rail journey.

5:30 am	Denali Natural History Tour (approx.)
4:00 pm	Deluxe Dome Rail, Denali to Fairbanks
8:00 pm	Arrive in Fairbanks

Overnight: Fairbanks

DAY 11: THURSDAY - FAIRBANKS

This morning, board your deluxe motorcoach for a visit to the historic Gold Dredge #8 where you will get the chance to do some panning just like the early pioneers of Alaska. Next you will enjoy a city tour of Fairbanks.

9:30 am	Gold Dredge #8
11:30 am	Fairbanks City Tour and lunch on own

DAY 12: FRIDAY - RETURN HOME FROM FAIRBANKS*

Transfer to the Fairbanks International Airport for your flight home. The transfer between the hotel and airport is included in the tour.



Fairbanks, Alaska

*The transfer from hotel to airport is included when departing flight information is provided to Norwegian Cruise Line at least 10 days prior to cruise start date. Transfer is offered only on the ending date of the tour. Guests who do not provide flight information within the guidelines forfeit this service. Unused transfers are non-refundable.

AUTHENTIC ALASKA EXPLORER

The most complete tour of Denali and Alaskan life in the past and present. For the active, outgoing guest, this tour offers spectacular vantage points of Denali with time to purchase an optional fishing excursion.

PLEASE NOTE

If you are making tour arrangements with guests in other cabins, please be sure to notify the reservations agent when booking Alaska Cruisetours. Guests may be routed differently if the reservations are not linked together. Thank you.

SOUTHBOUND TOUR ITINERARY†

DAY 1: TUESDAY - FAIRBANKS AIR ARRIVAL DAY*

Welcome to Fairbanks. Whether you're exploring Alaska's Golden Heart City or the wonderful amenities your hotel has to offer, get ready for an unforgettable journey in the days ahead. Please note the standard hotel check-in time is 3:00 pm. Enjoy the rest of your day at leisure.

Overnight: Fairbanks

DAY 2: WEDNESDAY - FAIRBANKS/DENALI

Your Norwegian Cruise Line Tour Director will greet you at the hotel this morning for a group orientation meeting. After the orientation, enjoy a morning ride on the Riverboat Discovery, a three-hour journey that will take you into the heart of Alaska. Operated by a family who has made the Alaskan rivers home for five generations, you'll witness a Bush pilot take off and land beside the boat, and hear stories of flying into remote Alaska firsthand. Halfway through the experience, you'll be immersed in frontier living with a guided walking tour of a recreated Athabascan Indian village. See cabins made of spruce logs, along with other indigenous dwellings that have allowed the strong Athabascan people to survive for thousands of years in this harsh environment.

After a brief city tour of Fairbanks, travel by deluxe motorcoach to Denali. An open evening in Denali is available for optional activities, such as whitewater rafting, helicopter flightseeing, hiking, or one of the park service programs.

8:00 am	Depart Hotel
8:45 am	Riverboat Discovery cruise
12:30 pm	Brief Fairbanks City Tour
2:30 pm	Depart for Denali by motorcoach
6:00 pm	Arrive in Denali

Overnight: Denali

DAY 3: THURSDAY - DENALI

More than just a mountain, Denali National Park is 6 million acres of wild land. Hop on the National Park Service bus and travel into this pristine region of Alaska on the only road into and out of the park. Along the way, enjoy a fully narrated ride learning about the flora and fauna of the area while looking out for the wild animals that roam freely and call this park home. While in this beautiful area, set aside time to experience the solitude and tranquility that vast wilderness can provide. During your Denali Natural History tour, you will travel approximately 17 miles into Denali National Park, enjoying the incredible scenery and learning about the history of the park. Tour duration is approximately 4-5 hours. Upon arrival in Alaska, your Tour Director will advise you of your tour time. The remaining part of the day is open.

1:00 pm (approx.) Denali Natural History Tour

Overnight: Denali

DAY 4: FRIDAY - DENALI/ANCHORAGE

Today's itinerary includes a morning Iditarod Sled Dog Kennel tour where you'll learn about the Alaska state sport of dog mushing. You'll be amazed to learn about this fascinating sport, the musher and the dogs – you'll even get to hold a future champion puppy in your arms. After this authentic visit, we won't be surprised if you are ready to run "The Last Great Race" yourself. In the afternoon, travel along the rails of the Alaska Railroad to the rail depot of Talkeetna. You'll enjoy the 360-degree views from your deluxe dome railcar seat. As the gorgeous scenery of Alaska rolls past, be watchful for wildlife, as well as glimpses of Mt. Denali, or, as local Alaskans call it, "The Great One." Full bar and meal service are available for purchase during your rail journey. Continue via motorcoach to Anchorage.

7:30 am	Depart hotel
8:00 am	Iditarod Kennel visit
12:30 pm	Deluxe Dome Rail, Denali to Talkeetna
5:00 pm	Depart for Anchorage via motorcoach
7:30 pm	Arrive in Anchorage

Overnight: Anchorage



Talkeetna, Alaska



Denali, Alaska

* The transfer from Airport to Hotel is included when arriving flight information is provided to Norwegian Cruise Line at least 10 days prior to tour start date. Transfer is offered only on the starting date of the tour. Guests who do not provide flight information within the guidelines forfeit this service. Unused transfers are non-refundable.

AUTHENTIC ALASKA EXPLORER

PLEASE NOTE

If you are making tour arrangements with guests in other cabins, please be sure to notify the reservations agent when booking Alaska Cruisetours. Guests may be routed differently if the reservations are not linked together. Thank you.

SOUTHBOUND TOUR ITINERARY[†] (CONTINUED)

DAY 5: SATURDAY - ANCHORAGE/SOLDOTNA/HOMER

This morning, you'll head south and tour down the Turnagain Arm along the Seward Highway. This "All-American scenic highway" has spectacular views of the Cook Inlet and Chugach Mountains. In dramatic fashion, see where the mountains meet the sea. Watch along the banks of the rivers where fishermen call this area home from May to September.

Visit the Alaska Wildlife Conservation Center where you will see moose, bears, musk ox and other indigenous animals of the region. Taking in orphaned animals and providing quality animal care year-round, the Conservation Center is dedicated to the protection and preservation of Alaska's wildlife. Animals that cannot be released back into the wild are given a permanent home at the Center.

As you continue through the mountains of the Kenai Peninsula down the coast, enjoy the spectacular views of Kachemak Bay, the Kenai Mountains and several volcanic peaks across Cook Inlet, including Mt. Augustine, Mt. Iliamna and Mt. Redoubt. Near the southern tip of the Kenai Peninsula, you'll encounter the town of Homer, an authentic Alaskan community not geared toward mass tourism, often described as "where the land ends and the sea begins." Homer has a history steeped in commercial fishing and a mild climate moderated by the Pacific Ocean. This results in warmer winters and cooler summers compared to other areas of Alaska. Homer is also famous for the Homer Spit, a 4.5-mile-long natural spit of land extending into Kachemak Bay, which you can explore in the evening.

Visit the Alaska Islands & Ocean Visitor Center before arriving to the hotel – your window to the largest seabird refuge in the world with all the natural wonders of Kachemak Bay right outside its doors. The Alaska Islands & Ocean Visitor Center is a partnership between the Alaska Maritime National Wildlife Refuge and the Kachemak Bay Research Reserve, dedicated to understanding and conserving the marine environment. Enjoy the modern displays, movies and information throughout as the Center takes you on an incredible journey through this rough and rugged land.

8:00 am	Depart Anchorage Hotel
9:00 am	Alaska Wildlife Conservation Center
4:15 pm	Islands and Oceans Visitor Center
5:15 pm	Arrive in Homer and visit Homer Spit

Overnight: Homer

DAY 6: SUNDAY - HOMER FREE DAY

Open day in Homer to explore this community. Book an optional fishing excursion for halibut and salmon, ride one of the ferries to the remote communities of Halibut Cove or Seldovia, or simply stay in town to enjoy the many local galleries and restaurants.

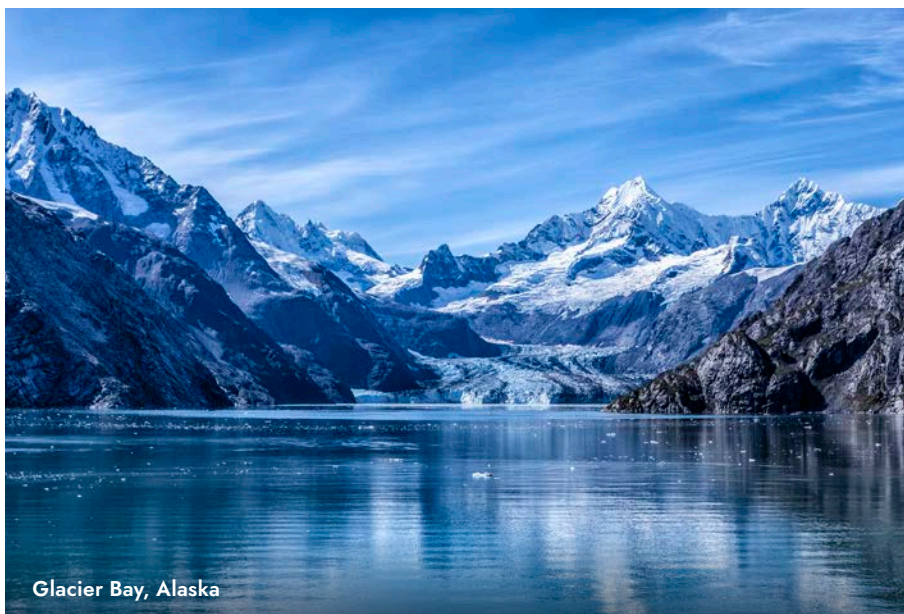
Overnight: Homer

DAY 7: MONDAY - HOMER/SEWARD

After departing Homer, enjoy lunch in the community of Soldotna. Then stop near the world-famous Kenai River where fishermen lure large King Salmon fish and learn about the five species of local salmon. Continue in the deluxe motorcoach to Seward to board Norwegian Jewel for your 7-day cruise.

8:30 am	Depart Hotel
12:30 pm	Lunch on your own in Soldotna
4:00 pm	Arrive in Seward and embark Norwegian Jewel

DAYS 8-14: TUESDAY TO MONDAY NORWEGIAN JEWEL SOUTHBOUND CRUISE



Glacier Bay, Alaska



Ketchikan, Alaska

[†] The transfer from Airport to Hotel is included when arriving flight information is provided to Norwegian Cruise Line at least 10 days prior to tour start date. Transfer is offered only on the starting date of the tour. Guests who do not provide flight information within the guidelines forfeit this service. Unused transfers are non-refundable.

AUTHENTIC ALASKA EXPLORER

PLEASE NOTE

If you are making tour arrangements with guests in other cabins, please be sure to notify the reservations agent when booking Alaska Cruisetours. Guests may be routed differently if the reservations are not linked together. Thank you.

NORTHBOUND TOUR ITINERARY†

DAYS 1-7: MONDAY TO SUNDAY - NORWEGIAN JEWEL NORTHBOUND CRUISE

DAY 8: MONDAY - SEWARD/HOMER

Your Norwegian Cruise Line Tour Director will greet you in Seward upon debarkation of Norwegian Jewel. Board your deluxe motorcoach for your journey through the Kenai Peninsula where Alaskans go to play! In dramatic fashion, see where mountains meet the sea. Watch along the banks of the rivers where fishermen call this area home from May to September.

A lunch stop will be made in the community of Soldotna, also known as the "Fishing Capital of the World." Enjoy a brief stop near the world-famous Kenai River and see where monster King Salmon fish are lured by fishermen, and learn about the five species of salmon that call Alaska home.

As you continue through the mountains of the Kenai Peninsula down the coast, enjoy the spectacular views of Kachemak Bay, the Kenai Mountains and several volcanic peaks across Cook Inlet, including Mt. Augustine, Mt. Iliamna and Mt. Redoubt. Near the southern tip of the Kenai Peninsula, you'll encounter the town of Homer, an authentic Alaskan community not geared toward mass tourism, often described as "where the land ends and the sea begins."

Visit the Alaska Islands & Ocean Visitor Center before arriving to the hotel – your window to the largest seabird refuge in the world with all the natural wonders of Kachemak Bay right outside its doors. The Alaska Islands & Ocean Visitor Center is a partnership between the Alaska Maritime National Wildlife Refuge and the Kachemak Bay Research Reserve, dedicated to understanding and conserving the marine environment. Enjoy the modern displays, movies and information throughout as the Center takes you on an incredible journey through this rough and rugged land.

Homer has a history steeped in commercial fishing and a mild climate moderated by the Pacific Ocean. This results in warmer winters and cooler summers compared to other areas of Alaska. Homer is also famous for the Homer Spit, a 4.5-mile-long natural spit of land extending into Kachemak Bay, which you can explore in the evening.

8:00 am	Disembark Norwegian Jewel
11:00 am	On-your-own Lunch in Soldotna/Kenai Area
12:45 pm	Depart Soldotna/Kenai Area
2:45 pm	Islands & Ocean Visitor Center
4:00 pm	Arrive in Homer and visit Homer Spit

Overnight: Homer

DAY 9: TUESDAY - HOMER FREE DAY

Open day in Homer to explore this community. Book an optional fishing excursion for halibut and salmon, ride one of the ferries to the remote communities of Halibut Cove or Seldovia, or simply stay in town to enjoy the many local galleries and restaurants.

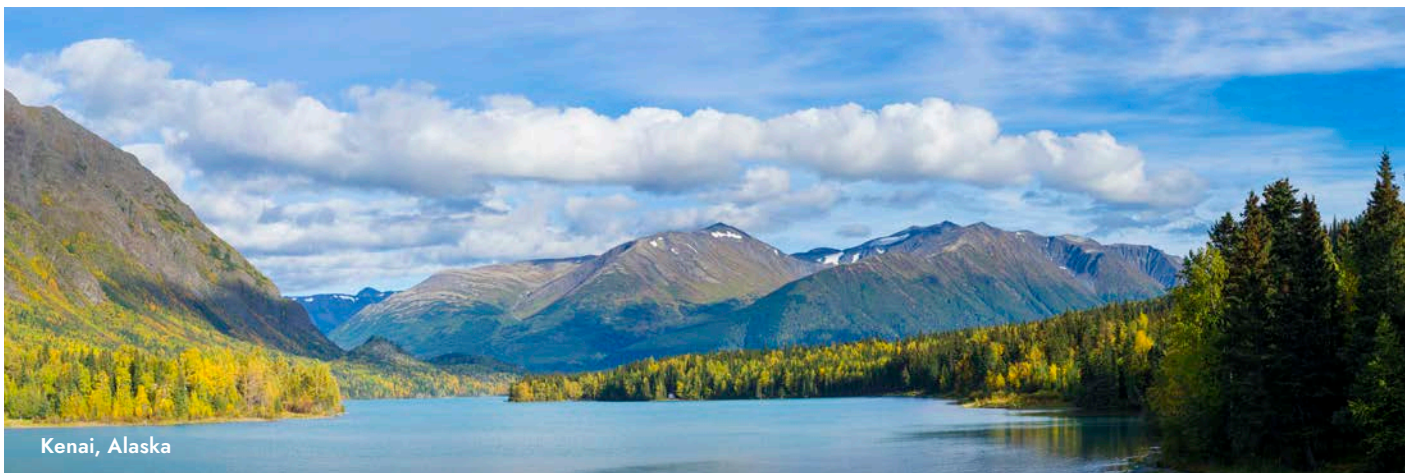
Overnight: Homer

DAY 10: WEDNESDAY - HOMER/ANCHORAGE

After departing Homer, stops will be made along the way for you to experience the beauty of the area and break for lunch. The Alaska Wildlife Conservation Center will have you up close to moose, bears, musk ox and other indigenous animals of the region. Taking in orphaned animals and providing quality animal care year-round, the Conservation Center is dedicated to the protection and preservation of Alaska's wildlife. Animals that cannot be released back into the wild are given a permanent home at the Center. Continue in the deluxe motorcoach to Anchorage, Alaska's largest city, which is surrounded by beautiful mountains and water, and many walking trails for you to explore. During the extended daylight hours in the summer months, you can extend your evening activities to suit your personal style.

9:00 am	Depart Homer
12:00 pm	Lunch on your own
4:00 pm	Alaska Wildlife Conservation Center
6:30 pm	Arrive in Anchorage

Overnight: Anchorage



Kenai, Alaska

†The transfer from hotel to airport is included when departing flight information is provided to Norwegian Cruise Line at least 10 days prior to cruise start date. Transfer is offered only on the ending date of the tour. Guests who do not provide flight information within the guidelines forfeit this service. Unused transfers are non-refundable.

AUTHENTIC ALASKA EXPLORER

PLEASE NOTE

If you are making tour arrangements with guests in other cabins, please be sure to notify the reservations agent when booking Alaska Cruisetours. Guests may be routed differently if the reservations are not linked together. Thank you.

NORTHBOUND TOUR ITINERARY[†] (CONTINUED)

DAY 11: THURSDAY - ANCHORAGE/TALKEETNA/DENALI

This morning, you'll board your deluxe motorcoach and travel north to the rail depot of Talkeetna. Enjoy traveling along the rails of the Alaska Railroad to Denali National Park while taking in the 360-degree views from your deluxe dome railcar seat. As the gorgeous scenery of Alaska rolls past, be watchful for wildlife and glimpses of Mt. Denali, or, as local Alaskans call it, "The Great One." Full bar and meal service are available for purchase during your rail journey. An open evening in Denali is available for optional activities such as whitewater rafting, helicopter flightseeing, hiking or one of the park service programs.

7:30 am	Depart Anchorage for Talkeetna via motorcoach
11:20 am	Deluxe Dome Rail, Talkeetna to Denali
4:00 pm	Arrive in Denali

Overnight: Denali

DAY 12: FRIDAY - DENALI

Today's itinerary begins with an included stop at a local Iditarod sled dog kennel where you'll learn about the Alaska state sport of dog mushing. You'll be amazed about this fascinating sport, the musher, the dogs, and even get to hold a future champion puppy in your arms. After this authentic visit, we won't be surprised if you are ready to run "The Last Great Race" yourself. More than just a mountain, Denali National Park is 6 million acres of wild land. Hop on the National Park Service bus and travel into this pristine region of Alaska on the only road into and out of the park. Along the way, enjoy a fully narrated ride learning about the flora and fauna of the area while looking out for the wild animals that roam freely and call this park home. While in this beautiful area, set aside time to experience the solitude and tranquility that vast wilderness can provide. During your Denali Natural History tour, you will travel approximately 17 miles into Denali National Park, enjoying the incredible scenery and learning about the history of the park. Tour duration is approximately 4-5 hours.

Upon arrival in Alaska, you will be advised of your park tour and kennel tour times by your Tour Director.

8:00 am	Depart Hotel
8:30 am	Iditarod Kennel visit
11:00 am	Lunch on your own, Denali Visitors Center
12:00 pm (approx.)	Denali Natural History Tour

Overnight: Denali

DAY 13: SATURDAY - DENALI/FAIRBANKS

This morning, board the motorcoach for your journey to Fairbanks. Upon arrival, enjoy a brief city tour of Fairbanks with an included stop at the Trans-Alaska Oil Pipeline. Time for lunch on your own will be available. Enjoy an afternoon ride on the Riverboat Discovery, a 3-hour journey that will take you into the heart of Alaska. Operated by a family who has made the Alaskan rivers home for five generations, you'll witness a Bush pilot take off and land beside the boat, and hear stories of flying into remote Alaska firsthand. Half way through the experience, you'll be immersed in frontier living with a guided walking tour of a recreated Athabaskan Indian village. See cabins made of spruce logs, along with other indigenous dwellings that have allowed the strong Athabaskan people to survive for thousands of years in this harsh environment. The evening is yours to explore Fairbanks or take an optional tour.

8:00 am	Depart Hotel
11:00 am	Brief Fairbanks City Tour and lunch on your own
2:00 pm	Riverboat Discovery Cruise
5:30 pm	Arrive at Hotel

Overnight: Fairbanks

DAY 14: SUNDAY - RETURN HOME FROM FAIRBANKS*

Transfer to the Fairbanks International Airport for your flight home.



Fairbanks, Alaska



Skagway, Alaska

*The transfer from hotel to airport is included when departing flight information is provided to Norwegian Cruise Line at least 10 days prior to cruise start date. Transfer is offered only on the ending date of the tour. Guests who do not provide flight information within the guidelines forfeit this service. Unused transfers are non-refundable.

DENALI VALDEZ EXPLORER

Our most picturesque tour of Denali and the Alaska Wilderness.

PLEASE NOTE

If you are making tour arrangements with guests in other cabins, please be sure to notify the reservations agent when booking Alaska Cruisetours. Guests may be routed differently if the reservations are not linked together. Thank you.

SOUTHBOUND TOUR ITINERARY[†]

DAY 1: Tuesday - Anchorage - Air Arrival Day*

Welcome to Anchorage. Whether you're exploring Alaska's largest city or the wonderful amenities your hotel has to offer, get ready for an unforgettable journey in the days ahead fully escorted by a local Alaskan guide. Please note the standard hotel check-in time is 3:00 pm. Guests who arrive earlier may have to wait to occupy their rooms. Enjoy the rest of your day at leisure.

Overnight: Anchorage

DAY 2: Wednesday - Anchorage/Denali

Your Norwegian Cruise Line Tour Director will greet you at your Anchorage hotel this morning. Today you'll ride along the rails of the world-famous Alaska Railroad from Anchorage to Talkeetna with 360-degree views from your deluxe dome railcar seats. As the gorgeous scenery of Alaska rolls past, be watchful for wildlife, as well as glimpses of Mt Denali, or, as local Alaskans call it, "The Great One." Full bar and meal service are available for purchase during your rail journey. Continue from Talkeetna to Denali via motorcoach. Today's itinerary includes a kennel tour. Learn about the Alaska state sport of dog mushing with an included stop at a local Iditarod sled dog kennel. You'll be amazed to learn about this fascinating sport, the musher, the dogs, and even get to hold a future champion puppy in your arms. After this authentic visit, we won't be surprised if you are ready to run "The Last Great Race" yourself. Open evening for optional activities such as whitewater rafting, helicopter flightseeing, hiking, or one of the park service programs.

7:30 am	Depart for Rail Depot
8:15 am	Deluxe Dome Rail, Anchorage to Talkeetna
3:30 pm	Kennel visit
6:00 pm	Arrive at Denali Hotel

Overnight: Denali

DAY 3: Thursday - Denali

More than just the mountain, Denali National Park is six million acres of wild land. This morning, your tour will take you into this pristine region of Alaska on the only road into and out of the park. Along the way, enjoy a fully narrated ride learning about the flora and fauna of the area while looking out for the wild animals that roam freely and call this park home. While in this beautiful area, set aside time to experience the solitude and tranquility that vast wilderness can provide. During your Denali Natural History tour, you will travel approximately 17 miles into Denali National Park, enjoying the incredible scenery and learning about the history of the park. Tour duration is approximately 4-5 hours. Upon your arrival in Alaska, your Tour Director will advise you of your tour time. Open evening for optional activities.

1:00pm (approx.)	Denali Natural History Tour
----------------------------	-----------------------------

Overnight: Denali

DAY 4: Friday - Denali/Fairbanks

This morning you will have time on your own in Denali to explore. In the afternoon, continue north to Alaska's Golden Heart City, Fairbanks, on your deluxe motorcoach.

11:00 am	Lunch on your own
1:00 pm	Depart for Fairbanks
4:00 pm	Arrive in Fairbanks

Overnight: Fairbanks

DAY 5: Saturday - Fairbanks

This morning, enjoy a visit to the historic Gold Dredge #8 where you will get the chance to do some panning just like the early pioneers of Alaska. Afterwards, board your deluxe motorcoach for a city tour of Fairbanks before stopping in historic downtown for lunch on your own. Open evening to explore Fairbanks or take an optional tour.

9:30 am	Gold Dredge #8
12:00 pm	Lunch on your own
2:00 pm	Fairbanks City Tour
3:30 pm	Arrive at Fairbanks Hotel

Overnight: Fairbanks

DAY 6: Sunday - Fairbanks/Valdez

Today's journey travels south along the Richardson Highway to Valdez, the terminus of the Trans-Alaska Oil Pipeline. Enjoy spectacular vistas of the Alaska Range over one of the rarely utilized highways in Alaska. Enjoy your free evening in the beautiful port community of Valdez.

7:45 am	Depart Fairbanks
1:30 pm	Lunch on your own
5:45 pm	Arrive in Valdez

Overnight: Valdez

DAY 7: Monday - Valdez/Seward

This morning, you will cruise through the majestic Prince William Sound and along the Meares Glacier, keeping a watchful eye out for wildlife, including seals, sea otters, birds and even whales! View the Trans-Alaska Oil Pipeline Terminal where supertankers are loaded with crude oil from Prudhoe Bay as you leave the harbor. Continue your day-long journey to the port community of Whittier. Light meal included on board. Upon arrival in Whittier, board your deluxe motorcoach and make a stop at the Alaska Wildlife Conservation Center to view large animals found throughout Alaska. You'll get up close to moose, bears, musk ox and other indigenous animals of the region. Taking in orphaned animals and providing quality animal care year-round, the Conservation Center is dedicated to the protection and preservation of Alaska's wildlife. Animals that cannot be released back into the wild are given a permanent home at the Center. Continue towards Seward where you will board Norwegian Jewel for your 7-day cruise.

7:00 am	Depart Valdez on Prince William Sound Cruise
2:00 pm	Arrive in Whittier
3:00 pm	Alaska Wildlife Conservation Center
6:00 pm	Arrive in Seward and embark Norwegian Jewel

DAYS 8-14: Tuesday - Monday

Norwegian Jewel Southbound Cruise

NOTE: All times shown are approximate and subject to change without notice due to local conditions.

* The transfer from Airport to Hotel is included when arriving flight information is provided to Norwegian Cruise Line at least 10 days prior to tour start date. Transfer is offered only on the starting date of the tour. Guests who do not provide flight information within the guidelines forfeit this service. Unused transfers are non-refundable. All times shown are approximate and subject to change without notice due to local conditions

DENALI VALDEZ EXPLORER

PLEASE NOTE

If you are making tour arrangements with guests in other cabins, please be sure to notify the reservations agent when booking Alaska Cruisetours. Guests may be routed differently if the reservations are not linked together. Thank you.

NORTHBOUND TOUR ITINERARY†

DAYS 1 - 7: Monday - Sunday

Norwegian Jewel Northbound Cruise

DAY 8: Monday - Seward/Valdez

Your Norwegian Cruise Line Tour Director will greet you in Seward upon debarkation of Norwegian Jewel for your fully escorted tour. Board your deluxe motorcoach and make a stop at the Alaska Wildlife Conservation Center to view large animals found throughout Alaska. You'll get up close to moose, bears, musk ox and other indigenous animals of the region. Taking in orphaned animals and providing quality animal care year-round, the Conservation Center is dedicated to the protection and preservation of Alaska's wildlife. Animals that cannot be released back into the wild are given a permanent home at the Center. Continue on towards the unique town of Whittier, where you will board your cruise through the majestic Prince William Sound and along the 3-mile face of Meares Glacier, keeping a watchful eye out for wildlife, including seals, sea otters, birds and even whales! View the Trans-Alaska Oil Pipeline Terminal where supertankers are loaded with crude oil from Prudhoe Bay as you enter the harbor of Valdez. Light meal included on board.

9:00 am	Disembark Norwegian Jewel
11:00 am	Alaska Wildlife Conservation Center
12:30 pm	Lunch on your own
2:30 pm	Depart Whittier on Prince William Sound Cruise
9:00 pm	Arrive in Valdez

Overnight: Valdez

DAY 9: Tuesday - Valdez/Fairbanks

Today's journey travels north along the Richardson Highway to Fairbanks, Alaska's Golden Heart City. Enjoy spectacular vistas of the Alaska Range over one of the rarely utilized highways in Alaska.

7:00 am	Depart Valdez
11:00 am	Lunch on your own
6:00 pm	Arrive in Fairbanks

Overnight: Fairbanks

DAY 10: Wednesday - Fairbanks

This morning, enjoy a visit to the historic Gold Dredge #8 where you will get the chance to do some panning just like the early pioneers of Alaska. Afterwards, board your deluxe motorcoach for a city tour of Fairbanks before stopping in historic downtown for lunch on your own. Open evening to explore Fairbanks or take an optional tour.

9:30 am	Gold Dredge #8
12:00 pm	Lunch on your own
2:00 pm	Fairbanks City Tour
3:30 pm	Arrive at Fairbanks Hotel

Overnight: Fairbanks

DAY 11: Thursday - Fairbanks/Denali

This morning, depart Fairbanks towards Denali National Park on your deluxe motorcoach. Today's itinerary includes an afternoon kennel tour in Denali. Learn about the Alaska state sport of dog mushing with a stop at a local Iditarod sled dog kennel. You'll be amazed to learn about this fascinating sport, the musher and the dogs — you'll even get to hold a future champion puppy in your arms. After this authentic visit, we won't be surprised if you are ready to run "The Last Great Race" yourself. Open evening for optional activities such as whitewater rafting, helicopter flightseeing, hiking or one of the park service programs.

9:00 am	Depart Fairbanks Hotel
11:30 am	Lunch on your own
2:00 pm	Iditarod Sled Dog Kennel Visit
4:30 pm	Arrive at Denali Hotel

(Afternoon time subject to change)

Overnight: Denali

DAY 12: Friday - Denali

More than just the mountain, Denali National Park is six million acres of wild land. This morning, your tour will take you into this pristine region of Alaska on the only road into and out of the park. Along the way, enjoy a fully narrated ride learning about the flora and fauna of the area while looking out for the wild animals that roam freely and call this park home. While in this beautiful area, set aside time to experience the solitude and tranquility that vast wilderness can provide. During your Denali Natural History tour, you will travel approximately 17 miles into Denali National Park, enjoying the incredible scenery and learning about the history of the park. Tour duration is approximately 4-5 hours. Upon arrival in Alaska, your Tour Director will advise you of your tour time. Open evening for optional activities.

7:00 am (approx.)	Denali Natural History Tour
----------------------	-----------------------------

Overnight: Denali

DAY 13: Saturday - Denali/Anchorage

Your morning is open for optional activities in Denali. Travel by motorcoach to Talkeetna. Later in the day, you'll ride along the rails of the world-famous Alaska Railroad from Talkeetna to Anchorage with 360-degree views from your deluxe dome railcar seats. As the gorgeous scenery of Alaska rolls past, be watchful for wildlife, as well as glimpses of Mt. Denali, or as local Alaskans call it, "The Great One." Full bar and meal service are available for purchase during your rail journey.

11:30 am	Depart Denali Hotel
5:00 pm	Deluxe Dome Rail, Talkeetna to Anchorage
8:30 pm	Arrive at Anchorage Hotel

Overnight: Anchorage

DAY 14: Sunday - Return Home From Anchorage*

Transfer to the Anchorage International Airport for your flight home. The transfer between the hotel and airport is included in the tour.

*The transfer from hotel to airport is included when departing flight information is provided to Norwegian Cruise Line at least 10 days prior to cruise start date. Transfer is offered only on the ending date of the tour. Guests who do not provide flight information within the guidelines forfeit this service. Unused transfers are non-refundable.

DENALI TALKEETNA EXPLORER

The tour that gives you the best possible opportunity to see the largest mountain in North America from two distinctly different views.

PLEASE NOTE

If you are making tour arrangements with guests in other cabins, please be sure to notify the reservations agent when booking Alaska Cruisetours. Guests may be routed differently if the reservations are not linked together. Thank you.

SOUTHBOUND TOUR ITINERARY†

DAY 1: WEDNESDAY - AIR ARRIVAL DAY* INTO FAIRBANKS

Welcome to Fairbanks. Whether you're exploring Alaska's Golden Heart City or the wonderful amenities your hotel has to offer, get ready for an unforgettable journey in the days ahead.

Please note the standard hotel check-in time is 3:00 pm. Guests who arrive earlier may have to wait to occupy their rooms. Enjoy the rest of your day at leisure.

Overnight: Fairbanks

DAY 2: THURSDAY - FAIRBANKS

Your Norwegian Cruise Line Tour Director will greet you at your hotel this morning. After the orientation, enjoy a ride on the Riverboat Discovery, a three-hour journey that will take you into the heart of Alaska. Operated by a family who has made the Alaskan rivers home for five generations, you'll witness a Bush pilot take off and land beside the boat, and hear stories of flying into remote Alaska firsthand. Halfway through the experience, you'll be immersed in frontier living with a guided walking tour of a re-created Athabascan Indian village. See cabins made of Spruce Logs, along with other indigenous dwellings that have allowed the strong Athabascan people to survive for thousands of years in this harsh environment. In the afternoon, you'll enjoy a city tour of Fairbanks in a deluxe motorcoach. The tour includes a stop at the Trans-Alaska Oil Pipeline and gives you a great overview of the Fairbanks community. Open evening to explore Fairbanks or take an optional tour.

8:45 am Riverboat Discovery

12:45 pm Lunch on your own in Fairbanks

2:45 pm Fairbanks City Tour

4:00 pm Return to Hotel

Overnight: Fairbanks

DAY 3: FRIDAY - FAIRBANKS/DENALI

This morning, enjoy traveling along the rails of the world-famous Alaska Railroad from Fairbanks to Denali National Park with 360-degree views from your deluxe dome railcar seat. As you travel through the high tundra plateau into the gorgeous scenery of the Healy Gorge and Canyon, be watchful for wildlife. Full bar and meal service are available for purchase during your rail journey.

Open afternoon and evening for optional activities such as whitewater rafting, helicopter flightseeing, hiking or one of the park service programs.

8:15 am Deluxe Dome Rail Fairbanks to Denali

12:30 pm Lunch on own

3:30 pm Arrive at Hotel

Overnight: Denali

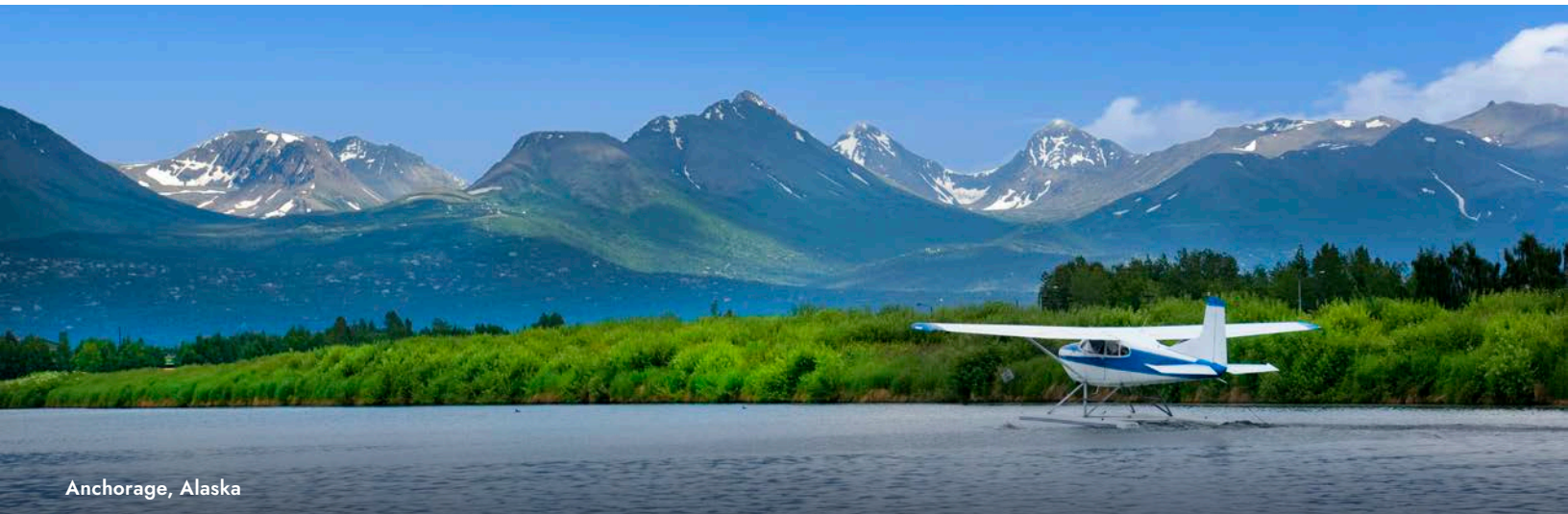
DAY 4: SATURDAY - DENALI

More than just a mountain, Denali National Park is six million acres of wild land. This afternoon, your Denali Natural History Tour will take you into this pristine region of Alaska on the only road into and out of the park. Along the way, enjoy a fully narrated ride learning about the flora and fauna of the area while looking out for the wild animals that roam freely and call this park home. While in this beautiful area, set aside time to experience the solitude and tranquility that vast wilderness can provide.

During your Denali Natural History tour, you will travel approximately 17 miles into Denali National Park, enjoying the incredible scenery and learning about the history of the park. Tour duration is approximately 4-5 hours. Upon arrival in Alaska, your Tour Director will advise you of your tour time. The remaining part of the day is open for optional activities.

7:00 am Denali Natural History Tour
(approx.)

Overnight: Denali



Anchorage, Alaska

All times shown are approximate.

* The transfer from Airport to Hotel is included when arriving flight information is provided to Norwegian Cruise Line at least 10 days prior to tour start date. Transfer is offered only on the starting date of the tour. Guests who do not provide flight information within the guidelines forfeit this service. Unused transfers are non-refundable.

DENALI TALKEETNA EXPLORER

PLEASE NOTE

If you are making tour arrangements with guests in other cabins, please be sure to notify the reservations agent when booking Alaska Cruisetours. Guests may be routed differently if the reservations are not linked together. Thank you.

SOUTHBOUND TOUR ITINERARY†(CONTINUED)

DAY 5: SUNDAY - DENALI/TALKEETNA

Today's itinerary includes the morning kennel tour. Learn about the Alaska state sport of dog mushing with an included stop at a local Iditarod sled dog kennel. You'll be amazed to learn about this fascinating sport, the musher, the dogs and even get to hold a future champion puppy in your arms. After this authentic visit, we won't be surprised if you are ready to run "The Last Great Race" yourself. Late morning, continue south by motorcoach and explore the unique town of Talkeetna. Open afternoon and evening for optional activities in Talkeetna. Overnight in one of the finest lodges in Alaska, the Talkeetna Alaskan Lodge with great views of Mt. Denali (weather permitting).

10:00 am Iditarod Sled Dog Kennel Visit (time subject to change)

12:00 pm Depart by Motorcoach to Talkeetna

2:30 pm Arrive in Talkeetna

Overnight: Talkeetna

DAY 6: MONDAY - TALKEETNA/SEWARD

This morning, you'll head south towards Seward. Stop in Anchorage for a brief Anchorage City Tour before continuing this afternoon down Turnagain Arm. Make a stop at the Alaska Wildlife Conservation Center to view large animals found throughout Alaska. You'll get up close to moose, bears, musk ox and other indigenous animals of the region. Taking in orphaned animals and providing quality animal care year-round, the conservation center is dedicated to the protection and preservation of Alaska's wildlife. Animals that cannot be released back into the wild are given a permanent home at the Center. Continue towards Seward where you will board Norwegian Jewel.

8:00 am Depart Talkeetna by motorcoach

11:30 am Anchorage City Tour and lunch on your own

2:00 pm Alaska Wildlife Conservation Center

5:00 pm Arrive in Seward and embark Norwegian Jewel

DAYS 7-13: TUESDAY - MONDAY

Norwegian Jewel Southbound Cruise



Juneau, Alaska

** Itinerary may be altered with a morning Riverboat Discovery cruise and an afternoon Fairbanks City Tour

All times shown are approximate and subject to change without notice due to local conditions

* The transfer from Airport to Hotel is included when arriving flight information is provided to Norwegian Cruise Line at least 10 days prior to tour start date. Transfer is offered only on the starting date of the tour. Guests who do not provide flight information within the guidelines forfeit this service. Unused transfers are non-refundable.

DENALI TALKEETNA EXPLORER

The tour that gives you the best possible opportunity to see the largest mountain in North America from two distinctly different views.

LAND TOUR HIGHLIGHTS

- Fully escorted by local Alaskan Tour Director
- Brief Anchorage and Fairbanks City Tour
- Denali Natural History Tour narrated by an Alaska naturalist
- Visit an Iditarod Sled Dog Musher's kennel for a private tour
- Alaska Railroad - Deluxe Dome Rail
- Plenty of time for optional exploring
- Riverboat Discovery Cruise

NORTHBOUND CRUISE TOUR ITINERARY†

DAYS 1-7: MONDAY-SUNDAY

Norwegian Jewel Northbound Alaska Cruise

DAY 8: MONDAY – DEBARK/SEWARD-TALKEETNA

This morning, you'll debark the Norwegian Jewel and greet your Norwegian Cruise Line Tour Director. Board your deluxe motorcoach to Anchorage and enjoy the beautiful views along the Turnagain Arm. Make a stop at the Alaska Wildlife Conservation Center to view large animals found throughout Alaska. You'll get up close to moose, bears, musk ox and other indigenous animals of the region. Taking in orphaned animals and providing quality animal care year-round, the conservation center is dedicated to the protection and preservation of Alaska's wildlife. Animals that cannot be released back into the wild are given a permanent home at the Center. Upon arrival in Anchorage, you will have a brief City Tour before stopping for lunch on-own in Alaska's most populous city. This afternoon, continue by motorcoach to the unique town of Talkeetna. Open evening for optional activities in Talkeetna. Overnight in one of the finest lodges in Alaska, the Talkeetna Alaskan Lodge with great views of Mt. Denali (weather permitting).

8:00 am (approx.)	Debark Norwegian Jewel
10:00 am	Alaska Wildlife Conservation Center
12:00 pm	Anchorage City Tour and lunch on your own
4:00 pm	Arrive in Talkeetna

Overnight: Talkeetna Alaskan Lodge

DAY 9: TUESDAY – TALKEETNA/DENALI

Today's itinerary includes an afternoon kennel tour. Learn about the Alaska state sport of dog mushing with an included stop at a local Iditarod sled dog kennel. You'll be amazed to learn about this fascinating sport, the musher, the dogs and even get to hold a future champion puppy in your arms. After this authentic visit, we won't be surprised if you are ready to run "The Last Great Race" yourself.

11:00 am (approx.)	Depart Talkeetna by motorcoach
2:00 pm (approx.)	Iditarod Sled Dog Kennel Visit (time subject to change)
4:30 pm	Arrive in Denali

Overnight: Denali

DAY 10: WEDNESDAY - DENALI

More than just a mountain, Denali National Park is 6 million acres of wild land. Hop on the National Park Service bus and travel into this pristine region of Alaska on the only road into and out of the park. Along the way, enjoy a fully narrated ride learning about the flora and fauna of the area while looking out for the wild animals that roam freely and call this park home. While in this beautiful area, set aside time to experience the solitude and tranquility that vast wilderness can provide. During your Denali Natural History tour, you will travel approximately 17 miles into Denali National Park, enjoying the incredible scenery and learning about the history of the park. Tour duration is approximately 4.5-5 hours.

7:00 am (approx.) Denali Natural History Tour

NOTE: Park Tour timing is subject to change by the National Park Service.

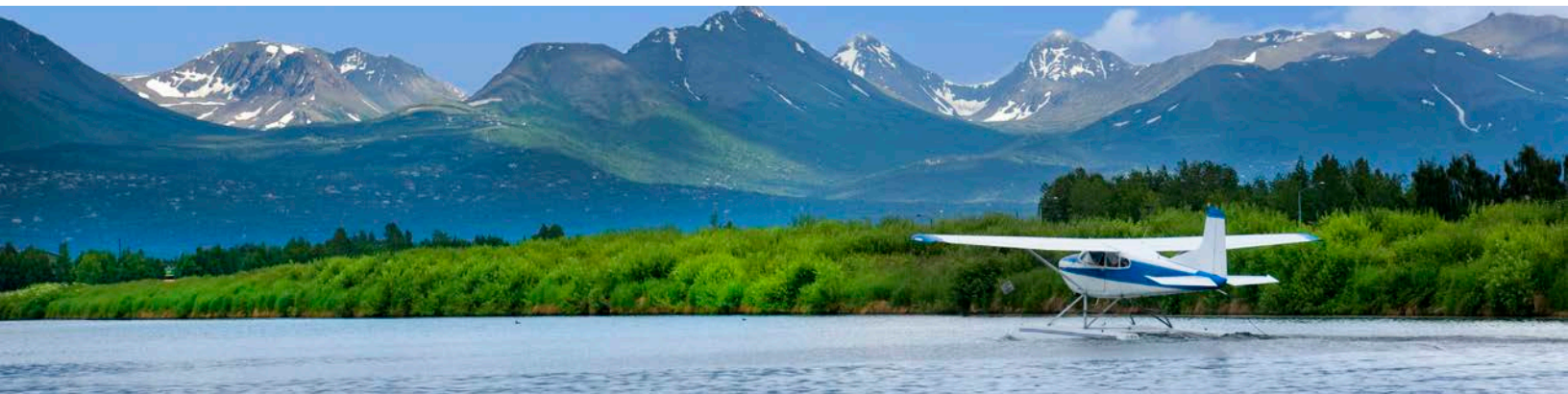
Overnight: Denali

DAY 11: THURSDAY – DENALI/FAIRBANKS

Enjoy an open morning and afternoon for optional activities such as whitewater rafting, helicopter flightseeing, hiking or one of the park service programs. Later this afternoon, enjoy traveling along the rails of the world-famous Alaska Railroad from Denali National Park to Fairbanks with 360-degree views from your deluxe dome railcar seat. As you travel through the high tundra plateau into the gorgeous scenery of the Healy Gorge and Canyon, be watchful for wildlife. Full bar and meal service are available for purchase during your rail journey.

6:00 am	Leisure Time
4:00 pm	Deluxe Dome Rail Denali to Fairbanks
8:00 pm	Arrive in Fairbanks

Overnight: Fairbanks



†The transfer from Airport to Hotel is included when arriving flight information is provided to Norwegian Cruise Line at least 10 days prior to tour start date. Transfer is offered only on the starting date of the tour. Guests who do not provide flight information within the guidelines forfeit this service. Unused transfers are non-refundable.

DENALI TALKEETNA EXPLORER

The tour that gives you the best possible opportunity to see the largest mountain in North America from two distinctly different views.

DAY 12: FRIDAY - FAIRBANKS

This morning, enjoy a ride on the Riverboat Discovery, a three-hour journey that will take you into the heart of Alaska. Operated by a family who has made the Alaskan rivers home for five generations, you'll witness a Bush pilot take off and land beside the boat, and hear stories of flying into remote Alaska firsthand. Halfway through the experience, you'll be immersed in frontier living with a guided walking tour of a re-created Athabascan Indian village. See cabins made of Spruce Logs, along with other indigenous dwellings that have allowed the strong Athabascan people to survive for thousands of years in this harsh environment. In the afternoon, you'll enjoy a city tour of Fairbanks in a deluxe motorcoach. The tour includes a stop at the Trans-Alaska Oil Pipeline and gives you a great overview of the Fairbanks community. Open evening to explore Fairbanks or take an optional tour.

8:45 am Riverboat Discovery

12:00 pm Lunch on your own in Fairbanks

2:00 pm Fairbanks City Tour

4:00 pm Return to Hotel

DAY 13: SATURDAY - RETURN HOME FROM FAIRBANKS

Transfer to the Fairbanks International Airport for your flight home. The transfer between the hotel and airport is included in the tour.

[†] All times shown are approximate and subject to change without notice due to local conditions.



ENCORE/ BLISS DENALI EXPLORER†

Enjoy a comprehensive Alaska Denali itinerary in only five days, complete with riverboat and railroad experiences as well as a preview of Denali's incredible wilderness. A flight to Seattle is included.

PLEASE NOTE

If you are making tour arrangements with guests in other cabins, please be sure to notify the reservations agent when booking Alaska Cruisetours. Guests may be routed differently if the reservations are not linked together. Thank you.

PRE-CRUISE TOUR ITINERARY†

Day 1, Tuesday-Air Arrival Day* Into Fairbanks

Welcome to Fairbanks. Whether you're exploring Alaska's Golden Heart City or the wonderful amenities your hotel has to offer, get ready for an unforgettable journey in the days ahead.

Please note that the standard hotel check-in time is 3:00 pm. Guests who arrive earlier may have to wait to occupy their rooms. Enjoy the rest of your day at leisure.

Overnight: Fairbanks

Day 2, Wednesday-Fairbanks

This morning, enjoy a cruise on the *Riverboat Discovery*, a three-hour journey that will take you into the heart of Alaska. Operated by a family who has made the Alaskan rivers home for five generations, you'll witness a Bush Pilot take off and land beside the boat, and hear stories of flying into remote Alaska firsthand. Halfway through the experience, you'll be immersed in frontier living with a guided walking tour of a re-created Athabascan Indian village. See cabins made of spruce logs, along with indigenous dwellings that have allowed the strong Athabascan people to survive for thousands of years in this harsh environment. Afterwards, board your deluxe motorcoach for a city tour of Fairbanks before stopping in historic downtown for lunch on your own. Open afternoon and evening to explore Fairbanks or take an optional tour. The tour includes a stop at the Trans-Alaska Oil Pipeline and give you a great overview of the Fairbanks community.

8:45 am	Riverboat Discovery Cruise
12:45 pm	Lunch on your own in Fairbanks
2:45 pm	Fairbanks City Tour
4:00 pm	Return to Hotel

Overnight: Fairbanks

Day 3, Thursday-Fairbanks/Denali

This morning, board your deluxe motorcoach to travel to Denali National Park. More than just a mountain, Denali National Park is six million acres of wild land. After lunch on your own, your tour will take you into this pristine region of Alaska on the only road into and out of the park. Along the way, enjoy a fully narrated ride learning about the flora and fauna of the area while looking out for the wild animals that roam freely and call this park home. While in this beautiful area, set aside time to experience the solitude and tranquility that vast wilderness can provide.

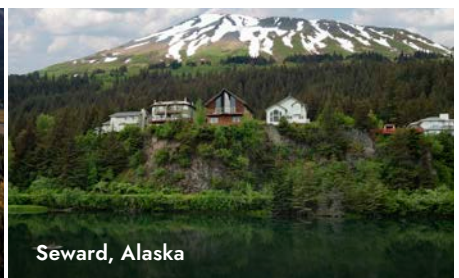
During your Denali Natural History Tour, you will travel approximately 17 miles into Denali National Park, enjoying the incredible scenery and learning about the history of the park. Tour duration is approximately 4-5 hours. Upon arrival in Alaska, your Tour Director will advise you of your tour time.



Glacier Bay, Alaska



Anchorage, Alaska



Seward, Alaska

9:00 am Depart Fairbanks for Denali by motorcoach

12:00 pm Arrive in Denali and lunch on your own

1:00 pm (approx.) Denali Natural History Tour

Overnight: Denali

Day 4, Friday-Denali/Anchorage

Today's itinerary includes a morning kennel tour. Learn about the Alaska state sport of dog mushing with an included stop at a local Iditarod sled dog kennel. You'll be amazed to learn about this fascinating sport, the musher, the dogs and even get to hold a future champion puppy in your arms. After this authentic visit, we won't be surprised if you are ready to run "The Last Great Race" yourself. Late morning, continue south by motorcoach to the town of Talkeetna. Continue on your journey south while traveling along the rails of the world-famous Alaska Railroad from Talkeetna to Anchorage in a deluxe dome railcar. Full bar and meal service are available for purchase during your rail journey.

8:30 am Iditarod Sled Dog Kennel Visit

11:00 am Depart for Talkeetna by motorcoach

5:00 pm Deluxe Dome Rail, Talkeetna to Anchorage

8:30 pm Arrive Anchorage Hotel

Overnight: Anchorage

NORWEGIAN BLISS

Days 5-12, Saturday-Anchorage/Norwegian Bliss

Transfer to the Anchorage International Airport for your flight to Seattle to embark on Norwegian Bliss. The transfer between the hotel and the airport as well as the flight to Seattle is included in the tour. Transfer from Seattle Seatac airport to the ship is also included.

NORWEGIAN ENCORE

Day 5, Saturday-Anchorage

Open day in Anchorage to explore Alaska's largest city.

Days 6-13, Sunday - Anchorage/ Norwegian Encore

Transfer to the Anchorage International Airport for your flight to Seattle to embark on Norwegian Encore. The transfer between the hotel and the airport as well as the economy class flight to Seattle is included in the tour. Transfer from Seattle Seatac airport to the ship is also included.

* The transfer from Airport to Hotel is included when arriving flight information is provided to Norwegian Cruise Line at least 10 days prior to tour start date. Transfer is offered only on the starting date of the tour. Guests who do not provide flight information within the guidelines forfeit this service. Unused transfers are non-refundable.

OPTIONAL TOURS

Enhance your Cruisetour experience with additional tours that can be purchased along the way through your Norwegian Tour Director.

Note: Below is a sample of options which are subject to change at the discretion of each operator. Prices, times and complete program details will be provided by your Tour Director.

DENALI NATIONAL PARK

Denali ATV Wilderness Adventure

Enjoy a memorable 10 mile ATV ride in the scenic wilderness on a Single or Side by Side ATV. Surrounded by Denali National Park, driving at speeds up to 30 mph, your adventure includes 360° overlook stops with views of lakes and valleys in the Alaska Range. Valid drivers license and minimum age requirements.

Helicopter - Denali by Air

Enjoy a 50-minute helicopter thrill as you soar high above the land and view wildlife and alpine glaciers while observing the Alaska Range and Denali. This tour is highly recommended for our "once-in-a-lifetime" adventurers.

Whitewater Rafting or Scenic Float Adventure

Each trip is approximately three hours with a total of two hours on the water. The Canyon Run is an exciting whitewater (Class III/IV) adventure. This is one ride where you will get wet! The Scenic Float is great for families. Enjoy scenic beauty along with Class II/III rapids.

Iditarod Champion Husky Homestead Tour

Step back from the crowds and join an intimate group for a personal tour of a homestead kennel. Meet sled dogs, visit with puppies and see summer training in action. One-and-a-half-hour narrated kennel tour.

FAIRBANKS

Arctic Circle Air Adventure

Fly above the Arctic! This thrilling tour allows guests to experience the Brooks Range, cross the Arctic Circle and fly the wilderness airways of Alaska's Arctic. This fully narrated adventure also includes a visit to the community of Wiseman, views of the Trans-Alaska Oil Pipeline and mighty Yukon River. Fully narrated.

Alaska Salmon Bake

Feast the Alaskan way! Enjoy an all-you-can-eat Alaskan-style meal as you dine on fire-grilled king salmon, roasted prime rib, and cod direct from Alaska's icy waters. Served with a salad bar, dessert and beverages. Afterwards, stroll through the neighboring Pioneer Park, an Alaskan theme park featuring historical buildings, transportation venues and shops, or catch a show!

Golden Heart Review

Experience the "Golden Heart Revue" at the Palace Theater for an evening of dinner, history and fun. This lighthearted musical comedy is about the gold rush and the founding of Fairbanks. Sold in conjunction with Alaska Salmon Bake.

Riverboat Discovery

The *Riverboat Discovery* is a three-hour narrated cruise where you will see the "wedding of the rivers", watch Susan Butcher's Iditarod Champion sled dogs in action, view a bush pilot demonstration, and join an Alaska Native guide on a personal tour of an Athabaskan Village.

GIRDWOOD

Helicopter Dog Sled Tour

Mush! Ride on a dog sled! A helicopter is used to transport you to an alpine camp where an experienced guide will accompany you as you mush along a snow-covered glacier. Drive the sled yourself or ride as you enjoy the dramatic scenery. Back at camp you can bundle yourself up in actual Iditarod racing gear including an original bib-number for a once-in-a-lifetime photo opportunity. You will learn about Alaskan Huskies and their guide, a 9-time Iditarod Trail veteran.

ANCHORAGE

Knik Glacier/Wildlife Flightseeing

Fly over a glacier! Soar above the blue-crevassed face of a 3,000-foot-thick glacier and view some of Alaska's most rugged mountain peaks in the Chugach Mountain Range and Prince William Sound. The extended tour includes Columbia Glacier, Prince William Sound's largest tidewater glacier, and possibly a swing by Glacier Island to view sea lions sunning themselves on the rocky coastline.

Anchorage Day Hike

Enjoy the long Alaska summer days and midnight sun by hiking the beautiful Chugach Mountain Range from Anchorage. The hikes include: transportation from downtown office to trailhead, a guided naturalist hike in the valleys and peaks surrounding Anchorage, bottled water and a snack. Each hike is tailored to your hiking and fitness levels. Valley stroll or mountain climb? Your naturalist guide will point out and discuss the flora and fauna of these unique coastal Alpine mountains.

HOMER

Halibut and Salmon Charter fishing

Let's go halibut and salmon fishing! Full-day adventure in Kachemak Bay seeking out halibut to impress your neighbors back home! Early morning check-in to purchase your license before you head to the boat for departure to fishing grounds. For those wanting to participate without the work, onboard staff assist with baiting the hook and handling the halibut once you bring it up from the ocean floor. A local fish processor can assist with vacuum packing and freezing your fish to send home at an additional cost. Dress in warm layered clothing and bring along a hat and gloves. Don't forget your lunch and drinks! Approximately \$325 per person – may charge \$10 fuel surcharge at check-in. Strict cancellation penalties!!! License is not included but is available at check-in for an extra cost. (Usually \$20 for 1-day license). Includes fish cleaning but does not include fish processing or gratuity. Daily limit is 2 halibut per person (subject to change) - one fish of any size and a second fish of 29 inches or less. Annual bag limit for charter caught halibut is 5 per person. Space is limited. Fishing regulations in Alaska are subject to change.

If interested, contact Alaska Coastal Marine Services here.

<https://halibutfishinghomer.alaska.com/>

Guided Sea Kayaking

Great for beginning or experienced sea kayakers. Trip begins with a water taxi ride across Kachemak Bay to the protected waters of the fjords in Kachemak Bay State Park. Your guide will provide an orientation and assistance throughout the tour. Spend the day paddling in spectacular scenery with abundant wildlife viewing opportunities. Single and double kayaks (Necky style) are used and are very stable for beginners. Bring along warm clothes, light rain gear, lunch, snacks, and drinks. Small or waterproof cameras and binoculars recommended! Includes: instruction, guided adventure, and all transportation.

Guided Interpretive Glacier Hike

Hike to Glacier Lake in Kachemak Bay State Park. This guided hike begins with a water taxi ride across Kachemak Bay to Glacier Spit. This is the most popular hike in the State Park. The guide provides information on the history, geology, flora and fauna of the area. Icebergs are often seen floating in the lake. The majority of the hike is on flat, but sometimes uneven, terrain. The trail is approximately four miles long. Not appropriate for those with limited mobility. Wear comfortable walking shoes, layered clothing and bring along a small pack with lunch, bottled water, and a light rain poncho.

Denali Flyer with Glacier Landing

The most popular flightseeing tour of Denali. This flight takes you to the western end of Denali National Park and Preserve. Explore the south of Denali Park including a once-in-a-lifetime opportunity to land on a glacier.

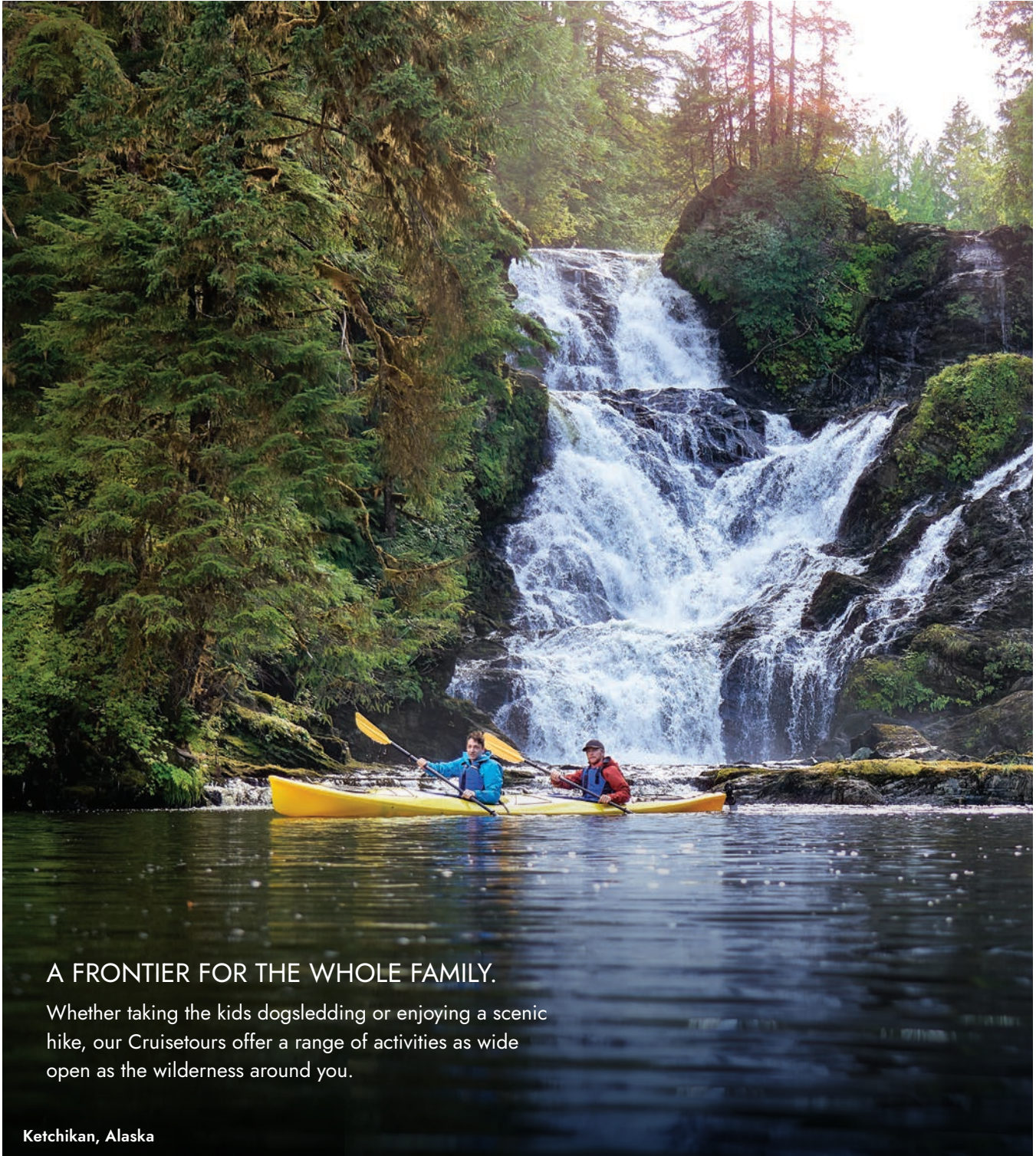
Jetboat Wilderness Excursion

This exciting 20-mile jet boat excursion whisks you into the heart of the wilderness in comfort. Along the riverbanks, you will take a quarter-mile nature walk to visit an authentic trapper's cabin. Wildlife, folklore, artifacts, and panoramic views of Denali and the Alaska Range will combine to make this an unforgettable and unique Alaskan river adventure.

All tours subject to operate based on local weather conditions.

Talkeetna River Odyssey Float Trip

The magnificent Talkeetna River features a glacially fed flat water experience great for all ages. Possible views of Mt. Denali and the Talkeetna Mountains while you enjoy spawning salmon, giant ferns, and fresh water streams. Rafting guides share stories of local history and personal experiences along the way.



A FRONTIER FOR THE WHOLE FAMILY.

Whether taking the kids dogsledding or enjoying a scenic hike, our Cruisetours offer a range of activities as wide open as the wilderness around you.

Ketchikan, Alaska

LAND TOUR HOTELS

Norwegian features Alaskan-owned and locally operated hotels to help you experience as much of the rugged and rustic atmosphere of Alaska whenever possible.

Since Alaska is a fairly remote location, some hotels may not have the same amenities and services you may normally expect in the lower 48 states. For Guests seeking hotels with a broader array of amenities and services, we recommend the Denali/Alyeska, Denali/Fairbanks or Authentic Alaska Cruisetours.

If you are traveling with family and friends in more than one stateroom, please advise your booking agent to link your reservations to ensure your entire party will be accommodated at the same hotels throughout the land tour.

IMPORTANT NOTE: For bookings with 1-4 guests in a cabin on the ship, one room (with two double beds) is included and will be assigned on the Cruisetour (Alaska land portion). For bookings where there are more than 4 guests in a cabin on the ship, an additional room is included on the cruisetour (two double beds / up to 4 guests per room). If additional rooms are desired for the Cruisetour portion for comfort, please contact Norwegian Cruise Line in advance of travel to request and price accordingly. Requests must be received at least 60 days before departure and confirmations will be based on availability at the time of request.

ANCHORAGE DENALI & FAIRBANKS DENALI EXPRESS HOTELS

ANCHORAGE PROPERTIES*



Hilton Anchorage



Marriott Anchorage Hotel



Sheraton Anchorage

FAIRBANKS PROPERTIES*



Bear Lodge



Sophie Station



Pikes Waterfront

DENALI NATIONAL PARK PROPERTIES*



Denali Grizzly Bear Resort



Denali Park Village

DENALI/ALYESKA, DENALI BY RAIL & AUTHENTIC ALASKA EXPLORER HOTELS

ANCHORAGE PROPERTIES*



Hilton Anchorage



Marriott Anchorage Hotel



Sheraton Anchorage

DENALI NATIONAL PARK PROPERTIES*



Denali Park Village



Grande Denali Lodge



Denali Bluffs

FAIRBANKS PROPERTIES*



River's Edge Resort



Pikes Waterfront



Bear Lodge

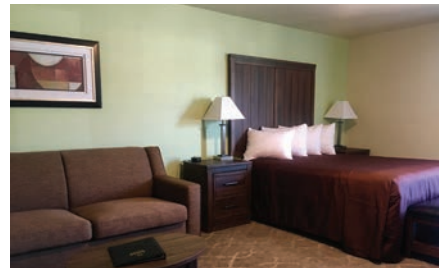
HOMER PROPERTIES*



Ocean Shores



Best Western Bidarka

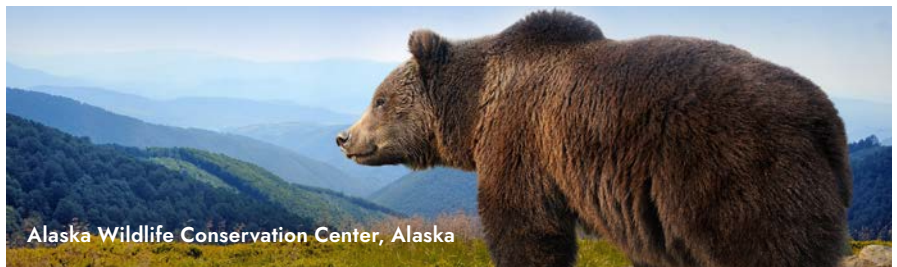


Aspen Suites Hotel Homer

GIRDWOOD PROPERTY*



Hotel Alyeska resort

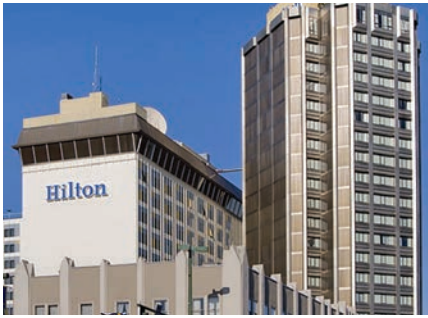


Alaska Wildlife Conservation Center, Alaska

*Hotels are assigned at Norwegian's discretion. We are unable to accept requests for specific hotels. Hotels are guaranteed at 30 days prior to the start of the tour. Norwegian Cruise Line reserves the right to substitute hotels of equal or greater quality.

DENALI VALDEZ & DENALI TALKEETNA

ANCHORAGE PROPERTIES*



Hilton Anchorage



Sheraton Anchorage

TALKEETNA PROPERTY*



Talkeetna Lodge

FAIRBANKS PROPERTY*



Bear Lodge



Pikes Waterfront



Sophie Station

DENALI NATIONAL PARK PROPERTIES*

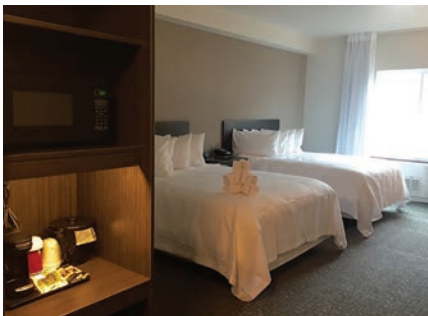


Denali Bluffs



Denali Park Village

VALDEZ PROPERTIES*



Totem Inn



Best Western Harbor Inn

ENCORE & BLISS DENALI EXPLORER HOTELS

FAIRBANKS PROPERTIES*



Bear Lodge



Pikes Waterfront



River's Edge



Sophie Station

ANCHORAGE PROPERTIES*



Hilton Anchorage



Marriott Anchorage Hotel

DENALI NATIONAL PARK PROPERTIES*



Denali Park Village



Denali Bluffs



Mendenhall Glacier, Alaska

*Hotels are assigned at Norwegian's discretion. We are unable to accept requests for specific hotels. Hotels are guaranteed at 30 days prior to the start of the tour. Norwegian Cruise Line reserves the right to substitute hotels of equal or greater quality.

MEET OUR AWARD-WINNING SHIPS.



NORWEGIAN BLISS BREAKAWAY PLUS CLASS

Built: **2018**
Crew: **1,716**
Gross Tonnage: **168,028**
Guests (Double Occupancy): **4,004**
Overall Length: **1,094ft**
Max Beam: **136ft**



NORWEGIAN JEWEL JEWEL CLASS

Refurbished: **2018**
Built: **2005**
Crew: **1,069**
Gross Tonnage: **93,502**
Guests (Double Occupancy): **2,376**
Overall Length: **965ft**
Max Beam: **125ft**



NORWEGIAN ENCORE BREAKAWAY PLUS CLASS

Built: **2019**
Crew: **1,735**
Gross Tonnage: **169,116**
Guests (Double Occupancy): **3,998**
Overall Length: **1,094ft**
Max Beam: **136ft**