

ANCHORAGE DENALI EXPRESS CRUISETOUR

11-DAY NORTHBOUND | NORWEGIAN SPIRIT



NORWEGIAN
CRUISE LINE®



TRAVEL INFORMATION

Welcome!

Whether you are a first-time or returning visitor to the 49th state, we are delighted you have chosen this unique tour and Alaska as your destination. Along the journey, you will meet many Alaskans who call this land home — from your Tour Director who assists with all aspects of your tour enjoyment to your local driver, whose knowledge will astound you time and time again. You will marvel at Alaska's wilderness and wildlife viewing opportunities while having time and freedom to discover your very own path. On Norwegian Cruise Line's Alaska Cruisetours, you'll experience the coastline and interior of the state as if you were a native. Enjoy the journey. We look forward to providing you authentic Alaskan experiences every step of the way.

IMPORTANT NOTE

A transfer from your hotel to the Anchorage Airport is included on the ending date of the Cruisetour when departing flight information is given to Norwegian Cruise Line at least 10 days prior to Cruisetour start date. Please contact Norwegian with your flight details:

Guests from U.S./Canada call 800.327.7030

Guests from U.K. call 0845 201 8900

Guests from France call +49 1805 62 55 27 (0.14/min.*)

Guests from other European countries call 00800 0310 21 21 (toll-free*)

*All rates refer to calls from landline networks. Rates may vary for calls from mobile networks.

Guests who do not provide departing flight information will forfeit this transfer and need to make their own arrangements to the airport. Unused transfers are non-refundable.

If you purchased your airfare independently and learn of any flight cancellations or delays, please contact Norwegian Cruise Line so that your transfers can re-arranged.

This program ends in Anchorage therefore your departing flight **MUST** be booked out of the Anchorage International Airport.

HOTEL TRANSFER

Transfers are included from hotel to airport when flight information is provided to Norwegian Cruise Line at least 10 days prior to cruise start date. Guests who do not provide flight information within the guidelines forfeit this service. Unused transfers are non-refundable.

**Guests who purchase extra nights after a Cruisetour, forfeit their transfer and must make their own way to the airport.*

PASSPORTS AND VISAS

It is each traveler's responsibility to have a passport valid for at least six months after the date of travel and a visa, if required. IMPORTANT: Passengers who are not U.S. citizens must check with the respective consulate or visa agency to determine what personal identification is required. Passengers who enter, leave and then re-enter the same country on their itinerary should check if they require a double-entry visa.

TRIP PREPARATION

A little pre-planning can make your trip go a lot smoother. Several weeks before your trip, make a list of what you will need to take with you. Make sure your personal documents (passports, visas) are in order and that you have enough prescription medications to last throughout the trip. We suggest you make photocopies of passports, visas and any other important travel documents and pack them separately from the originals. Avoid placing important medications or valuables, such as cameras or jewelry, in your checked luggage.

TOUR DIRECTORS

Your Alaskan Tour Director will be with you for the entire trip to help make the most of your time and experience the best Alaska has to offer. From providing information about Alaska's history, people and wildlife to offering suggestions on local restaurants and optional excursions, your Tour Director has your best interest at heart.

HOTELS

Norwegian Cruise Line features Alaskan-owned and locally operated hotels to help you experience as much of the rugged and rustic atmosphere of Alaska whenever possible. Since Alaska is a fairly remote location, some hotels may not have the same amenities and services you normally expect in the lower 48 states including air-conditioning, however, all hotels used are clean and comfortable. A maximum of two double or queen beds are included in each room depending on the hotel. King upgrades are not available. Hotels are assigned at Norwegian's discretion. Unfortunately, we are unable to accommodate requests for hotel substitutions.

CHECK-IN TIME: 4:00PM • CHECK-OUT TIME: 11:00AM

MEALS

Meals are not included unless specifically stated in your itinerary. All hotels have restaurants on-site. Other options available are either within walking distance or a short taxi ride from your hotel. Your Tour Director can help recommend restaurants, especially for guests with special dietary needs.

AVERAGE MEAL COST PER PERSON

Breakfast
\$18 to \$25
PER PERSON

Lunch
\$18 to \$30
PER PERSON

Dinner
\$20 to \$50
PER PERSON



TRAVEL INFORMATION



Note: * We're continually evaluating and enhancing our health and safety protocols and will make updates as public health standards evolve.



Ketchikan, Alaska

BAGGAGE

At each destination, we will ensure your bags are efficiently delivered to your hotel room. Upon departure, they will be picked up from your room and loaded onto the motorcoach.

BAGGAGE STORAGE DURING TOUR

As a convenience to our guests, we offer a service to store luggage while you are on the land portion of your Cruisetour. Your Tour Director will provide you with special tags to indicate storage. Those pieces of luggage will remain secured on the motorcoach during your tour.

PACKING RECOMMENDATIONS

- Comfortable, casual clothing for dressing in layers
- Comfortable shoes, such as tennis shoes or hiking boots
- Waterproof jackets, hats and warm clothing
- Sunscreen, binoculars, insect repellent and umbrellas
- Camera and plenty of film or spare memory card

Note: There are no laundry facilities on tour. Please bring adequate clothing.

CHILD RESTRAINT INFORMATION

Alaska State Law requires children to be in a car or booster seat as follows:

- Children younger than 1 year of age or less than 20 lbs (9 kg) must be in a rear-facing infant seat.
- ages 1-4 and at least 20 lbs (9 kg) must be in a child restraint.
- Children ages 5-7 who are less than 57 in (1.4 m) tall or less than 65 lbs (30 kg) must be in a booster seat. Booster seats are no longer required for children ages 5-7 once they reach 57 in (1.4 m) tall or weigh 65+ lbs (30+ kg).
- Parents are responsible for providing the appropriate car seat.

CLIMATE (APPROXIMATE)

MONTH	LOW	HIGH	AVERAGE HOURS OF LIGHT	
May	40°F 4°C	55°F 13°C	May	17 HOURS
Jun	48°F 9°C	62°F 17°C	Jun	18 HOURS
Jul	52°F 11°C	65°F 18°C	Jul	18 HOURS
Aug	50°F 10°C	62°F 17°C	Aug	16 HOURS
Sep	40°F 4°C	55°F 13°C	Sep	14 HOURS

MARINE AND WILDLIFE

- Wildlife is unpredictable but plentiful. You will have many opportunities for marine and wildlife viewing.
- When viewing wildlife, we strictly adhere to all suggested or required distances and procedures recommended by local wildlife agencies.

Note: Iditarod sled dog kennel visits during the Cruisetours do not include a sled ride.

SUGGESTED TIPPING: ESCORTED LAND TOURS

Tipping is not mandatory. However, here is a suggested guideline:

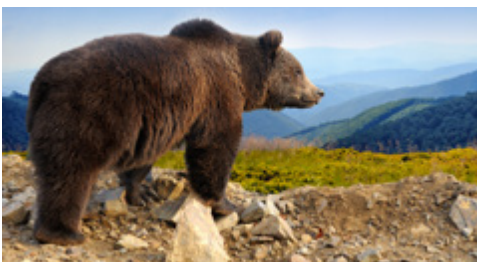
- Tour Director: \$5-\$7 per person, per day
- Motorcoach Driver: \$5-\$7 per person, per day
- Rail Host Guide: \$1-\$2 per person, per day

SMOKING

Smoking is not allowed in your motorcoach, on the Alaska Railroad, Denali Park bus or in your hotel room.

GUESTS WITH DISABILITIES

Please contact Norwegian Cruise Line to inform us if you have special needs. Motorcoaches and hotels are wheelchair accessible; however, due to limited availability, advance notice is required.



ANCHORAGE DENALI EXPRESS

One of our best-value land tours for time-conscious guests offering an up-close Denali experience — tour of Alaska's largest city and moderate hotel properties.

LAND TOUR HIGHLIGHTS

- Fully escorted by local Alaskan Tour Director
- Alaska Wildlife Conservation Center
- Brief Anchorage City Tour
- Denali Natural History Tour narrated by an Alaska naturalist
- Alaska Railroad – Adventure Class
- Plenty of time for optional exploring

NORTHBOUND TOUR ITINERARY†

DAYS 1-7: WEDNESDAY - TUESDAY NORWEGIAN SPIRIT NORTHBOUND ALASKA CRUISE

DAY 8: WEDNESDAY - SEWARD/ANCHORAGE

Your Norwegian Cruise Line Tour Director will greet you in Seward upon debarkation of Norwegian Spirit for your fully escorted tour. Board your deluxe motorcoach and travel from Seward to the Alaska Wildlife Conservation Center where you'll get up close to moose, bears, musk ox and other indigenous animals of the region. Taking in orphaned animals and providing quality animal care year-round, the Conservation Center is dedicated to the protection and preservation of Alaska's wildlife. Animals that cannot be released back into the wild are given a permanent home at the Center.

Continue in the deluxe motorcoach to Anchorage, Alaska's largest city, which is surrounded by beautiful mountains and water with many walking trails available for you to explore. Enjoy a city tour of Anchorage and time on your own for lunch at one of the many local restaurants. During the extended daylight hours in the summer months, you'll have plenty of time to enjoy evening activities to suit your personal style.

8:30 am Disembark Ship

10:30 am Alaska Wildlife Conservation Center

12:30 pm Anchorage City Tour and lunch on your own

3:30 pm Arrive at Anchorage Hotel

Overnight: Anchorage

DAY 9: THURSDAY - ANCHORAGE/DENALI

This morning, board your deluxe motorcoach to Denali National Park. More than just the mountain, Denali National Park is six million acres of wild land. After lunch on your own, your tour will take you into this pristine region of Alaska on the only road into and out of the park. Along the way, enjoy a fully narrated ride learning about the flora and fauna of the area while looking out for the wild animals that roam freely and call this park home. While in this beautiful area, set aside time to experience the solitude and tranquility that vast wilderness can provide.

During your Denali Natural History tour, you will travel into Denali National Park, enjoying the incredible scenery and learning about the history of the park.

7:30 am Depart for Denali

1:30 pm (approx.) Denali Natural History Tour

Overnight: Denali

DAY 10: FRIDAY - DENALI/ANCHORAGE

Your morning is open for optional activities in Denali. Later in the day, you'll take a motorcoach ride from Denali to Talkeetna and travel along the Susitna River where you're likely to see some wildlife. Continue via the Alaska Railroad from Talkeetna to Anchorage. Along the journey, wander the train, purchase a meal in the dining car, or just sit in your comfortable reclining seat and gaze at the magnificent scenery. Alaska Railroad Adventure Class features single-level cars with high ceilings, large picture windows and ample legroom.

12:00 pm Motorcoach from Denali to Talkeetna

5:00 pm Alaska Railroad Adventure Class, Talkeetna to Anchorage

8:00 pm Arrive at Anchorage Hotel

Overnight: Anchorage

DAY 11: SATURDAY - RETURN HOME FROM ANCHORAGE*

Transfer to the Anchorage International Airport for your flight home. The transfer between the hotel and airport is included in the tour.

Guests will be independent until their transfer time which will be set up based on their flight details.

† All times shown are approximate and subject to change without notice due to local conditions.

*The transfer from Hotel to Airport is included when departing flight information is provided to Norwegian Cruise Line at least 10 days prior to tour start date. Transfer is offered only on the departure date of the tour. Guests who do not provide flight information within the guidelines forfeit this service. Unused transfers are non-refundable.

OPTIONAL TOURS

Enhance your Cruisetour experience with additional tours that can be purchased along the way through your Norwegian Tour Director.

Note: Below is a sample of options which are subject to change at the discretion of each operator.

Prices, times and complete program details will be provided by your Tour Director. These tours cannot be pre-booked in advance.

DENALI NATIONAL PARK

DENALI NATIONAL PARK VISITOR CENTER (COMPLIMENTARY)

Learn more about the park by visiting the Denali Visitor Center located two miles from the park. Talk with park rangers and experience the exhibits at this award-winning facility. View the "Heartbeats of Denali" at the theater to experience the four seasons of this special place we call Denali. The bookstore and the concession-operated Morino Grill are located on the Visitor Center campus.

HELICOPTER - DENALI BY AIR

For "once-in-a-lifetime" adventurers, enjoy a 50-minute helicopter thrill as you soar high above the land and view wildlife and alpine glaciers while observing the Alaska Range and Denali.

WHITEWATER RAFTING OR SCENIC FLOAT ADVENTURE

Each trip is approximately three hours with a total of two hours on the water. The Canyon Run is an exciting whitewater (Class III/IV) adventure. This is one ride where you will get wet! The Scenic Float is great for families. Enjoy scenic beauty along with Class II/III rapids.

IDITAROD CHAMPION HUSKY HOMESTEAD TOUR

Step back from the crowds and join an intimate group for a personal tour of a homestead kennel. Meet sled dogs, visit with puppies and see summer training in action. One-and-a-half-hour narrated kennel tour.

ANCHORAGE

Knik Glacier/Wildlife Flightseeing

Fly over a glacier! Soar above the blue-crevassed face of a 3,000-foot-thick glacier and view some of Alaska's most rugged mountain peaks in the Chugach Mountain Range and Prince William Sound. The extended tour includes Columbia Glacier, Prince William Sound's largest tidewater glacier, and possibly a swing by Glacier Island to view sea lions sunning themselves on the rocky coastline.

Anchorage Day Hike

Enjoy the long Alaska summer days and midnight sun by hiking the beautiful Chugach Mountain Range from Anchorage. The hikes include: transportation from downtown office to trailhead, a guided naturalist hike in the valleys and peaks surrounding Anchorage, bottled water and a snack. Each hike is tailored to your hiking and fitness levels. Valley stroll or mountain climb? Your naturalist guide will point out and discuss the flora and fauna of these unique coastal Alpine mountains.



A FRONTIER FOR THE WHOLE FAMILY.

Whether taking the kids dog sledding or enjoying a scenic hike, our Cruisetours offer a range of activities as wide open as the wilderness around you.

LAND TOUR HOTELS

Norwegian features Alaskan-owned and locally operated hotels to help you experience as much of the rugged and rustic atmosphere of Alaska whenever possible.

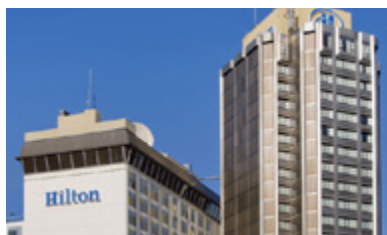
Since Alaska is a fairly remote location, some hotels may not have the same amenities and services you may normally expect in the lower 48 states including air-conditioning. Beds are typically double size (smaller than Queen), 2 beds per room and upgrades are not available. For Guests seeking hotels with a broader array of amenities and services, we recommend the Denali/Alyeska or Authentic Alaska Cruisetours.

If you are traveling with family and friends in more than one stateroom, please advise your booking agent to link your reservations to ensure your entire party will be accommodated at the same hotels throughout the land tour.

IMPORTANT NOTE: For bookings with 1-4 guests in a stateroom on the ship, one room (with two double beds) is included and will be assigned on the Cruisetour (Alaska land portion). For bookings where there are more than 4 guests in a stateroom on the ship, an additional room is included on the Cruisetour (two double beds / up to 4 guests per room). If additional rooms are desired for the Cruisetour portion for comfort, please contact Norwegian Cruise Line in advance of travel to request and price accordingly. Requests must be received at least 60 days before departure and confirmations will be based on availability at the time of request.

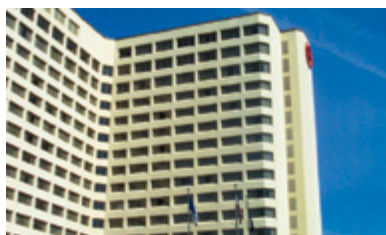
ANCHORAGE DENALI EXPRESS

ANCHORAGE PROPERTIES *



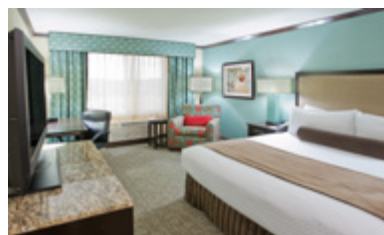
HILTON ANCHORAGE

500 W 3RD AVE
ANCHORAGE, AK 99501
907.272.7400



SHERATON ANCHORAGE

401 E 6TH AVE
ANCHORAGE, AK 99501
907.276.8700



CROWNE PLAZA ANCHORAGE

109 W INTERNATIONAL AIRPORT ROAD
ANCHORAGE, AK 99518
907.433.4100

DENALI NATIONAL PARK PROPERTIES *



DENALI GRIZZLY BEAR RESORT

MILE POST 231.1 GEORGE PARKS HIGHWAY
DENALI PARK, AK 99755
907.683.2696



DENALI PARK VILLAGE

MILE 231.1 GEORGE PARKS HIGHWAY
DENALI NATIONAL PARK
DENALI, AK 99755
907.683.8900

FINAL CRUISETOUR DOCUMENTS

Please note that the order of sites visited may vary to avoid congestion. Program timings are approximate and given here for general reference purposes. All timings and inclusions are subject to change at the discretion of our local operator as deemed necessary for operation.

Within 21 days of sailing, Guests will be able to check-in on NCL.com for their cruise and at this time a PDF itinerary will be available with the most up-to-date Cruisetour details for their confirmed program. Hotel assignments will also be available at that time and not before.

For inquiries regarding any of our Cruisetours or to confirm your spot, please call your travel agent or NCL directly at 800-327-7030. Hours of operation are Monday through Friday from 8am – 12am EST and Saturday and Sunday from 9am – 9pm EST.

* Hotels are assigned at Norwegian's discretion. We are unable to accept requests for specific hotels. Hotels are guaranteed at 30 days prior to the start of the tour. Norwegian Cruise Line reserves the right to substitute hotels of equal or greater quality. Extra nights must be booked independently.